



RAY

Cast iron condensing boiler

200i

Vent/air manual

**Installation instructions
for vent and air piping**

Also read and follow:

***200i* Boiler manual**

***200i* Control manual**



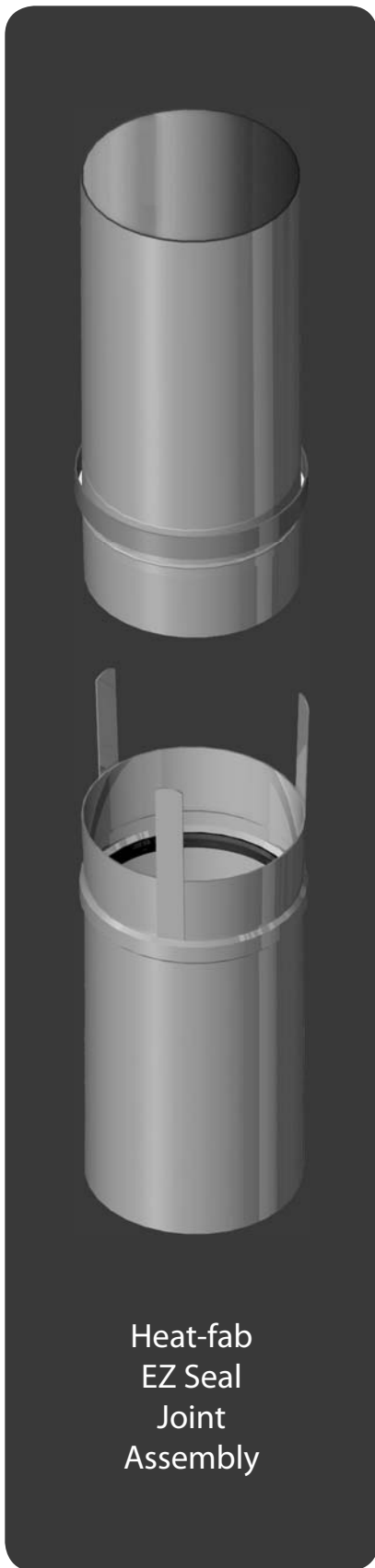
WARNING This manual is intended only for use by a qualified heating installer/technician. Read and follow this manual, all supplements and related instructional information provided with the boiler. Install, start and service the boiler only in the sequence and methods given in these instructions. Failure to do so can result in severe personal injury, death or substantial property damage.

WARNING **Do not use the boiler during construction.** Construction dust and particulate, particularly drywall dust, will cause contamination of the burner, resulting in possible severe personal injury, death or substantial property damage. The boiler can only be operated with a dust-free air supply. Follow the instruction manual procedures to duct air to the boiler air intake. If the boiler has been contaminated by operation with contaminated air, follow the instruction manual guidelines to clean, repair or replace the boiler if necessary.

CAUTION Affix these instructions near to the boiler/water heater. Instruct the building owner to retain the instructions for future use by a qualified service technician, and to follow all guidelines in the User's Information Manual.



The Mestek 200i boiler — Vent and air piping options



Heat-fab
EZ Seal
Joint
Assembly

Vent and air piping, general

Pages 2 and 3 are a brief overview of the options for vent and air piping configurations. Page 3 gives a summary and brief list of requirements for each of the vent/air configuration options.

When air is taken from the boiler room (no air pipe connected to the boiler air inlet fitting), follow the instructions in the 200i Boiler manual to ensure the boiler room has proper openings for combustion air and ventilation.

Vent piping

Pressurized venting only

All 200i boilers require vent piping listed for use in pressurized, condensing operation. Use only the materials specified in this manual.

Vent pipe options

Use only 3-inch Heat-fab Saf-T Vent® EZ Seal or Z-Flex® Z-Vent vent pipe and components. You will find specific component information for each configuration in this manual.

Vent pipe joint assembly

EZ Seal and Z-Vent vent piping use a silicon rubber ring-style gasket in each joint. Joints are secured using metal tabs that wrap around a ring on the adjacent piping component for Heat-fab vent pipe, or gear clamps for Z-Flex vent pipe. Never use screws in the vent piping. Screws are only applied to the air piping portion of Heat-fab SC concentric vent, used for concentric vent/air sidewall terminations.

Air piping

Air options

Combustion air can be piped through the side wall or through the roof of the building. Sidewall air intake can be done with either through-the-roof or sidewall venting. See the next page for a summary of each configuration.

Air piping materials

The best choices for air piping are 3-inch PVC, CPVC or ABS. These materials are easy to work with and yield a clean final appearance. Joint sealing is easier than other methods because it only requires use of the standard joint sealant for the type of plastic pipe used. And there are not horizontal seams requiring sealing like on metal air piping.

Other materials suitable for combustion air venting are 3-inch galvanized pipe, aluminum pipe and flexible aluminum pipe. All joints, including the seams, of these piping materials must be sealed with silicone adhesive sealant, such as Dow Corning 732.

Terminations

Through-the-roof terminations

Both vent and air piping must terminate with a Heat-fab 5300CI or Z-Flex 2SVSRCF03 rain cap.

Sidewall terminations

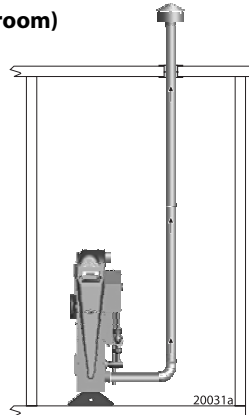
Vent and air pipes can be individually terminated using Heat-fab 9314TERM or Z-Flex 2SVSTEX0390 termination elbows with built-in screen, or concentrically terminated using Heat-fab type SC concentric vent/air pipe (only when using Heat-fab vent piping) Termination components as given in this manual.



The Mestek 200i boiler — Vent and air piping options

1 Vent piped through the roof (combustion air from the boiler room)

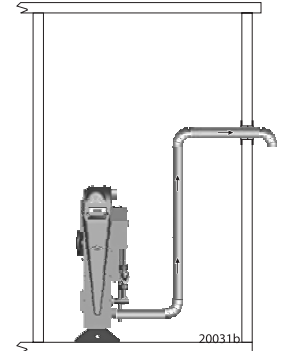
Vent components	Heat-Fab	Z-Flex
Vent piping/components (incl. supports, thimbles, etc.)	EZ-Seal 3-inch	Z-Vent 3-inch
Boiler adapter (adapts from EZ-Seal to Z-Vent piping)	Not required	2VSHTA03
Rain cap vent termination	5300CI	2SVSRCF03
Joint sealant, as needed	GE RTV106 or equivalent	



See pages 4 – 5

4 Vent piped through a side wall (combustion air from the boiler room)

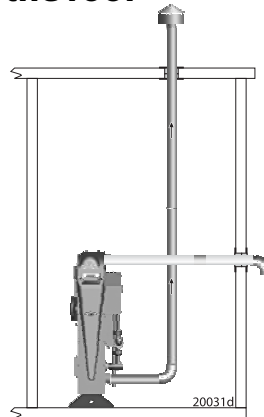
Vent components	Heat-Fab	Z-Flex
Vent piping/components (incl. supports, thimbles, etc.)	EZ-Seal 3-inch	Z-Vent 3-inch
Boiler adapter (adapts from Heat-fab to Z-vent piping)	Not required	2VSHTA03
Joint sealant, as needed	GE RTV106 or equivalent	
Termination elbow	9314TERM	2SVSTEX0390
Termination pipe section (1 ft)	9302	2SVEPWCF0301
Termination thimble	9393S	2SVSWTE03
Gear clamp (hose clamp)	3-inch clamp	7HS44XX



See pages 14 – 17

2 Vent piped through the roof (air piped through side wall)

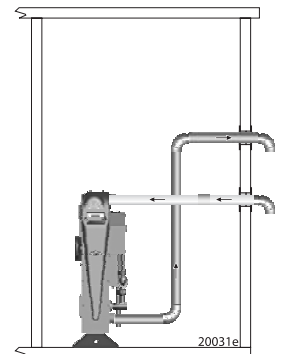
Vent components	Heat-Fab	Z-Flex
Vent piping/components (incl. supports, thimbles, etc.)	EZ-Seal 3-inch	Z-Vent 3-inch
Boiler adapter (adapts from Heat-fab to Z-vent piping)	Not required	2VSHTA03
Joint sealant, as needed	GE RTV106 or equivalent	
Rain cap vent termination	5300CI	2SVSRCF03
Air components	Heat-Fab	Z-Flex
Termination elbow	9314TERM	2SVSTEX0390
Termination pipe section (1 ft)	9302	2SVEPWCF0301
Termination thimble	9393S	2SVSWTE03
Gear clamp (hose clamp)	3-inch clamp	7HS44XX
Air piping/components (also supports, thimbles, etc.)	3-inch PVC, CPVC, ABS, galvanized or aluminum	



See pages 6 – 9

5 Vent & air piped through a side wall (separate vent and air terminations)

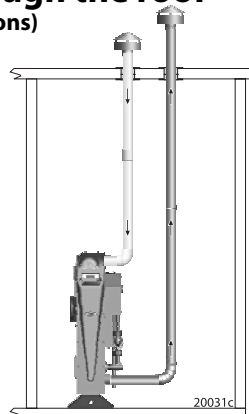
Vent components	Heat-Fab	Z-Flex
Vent piping/components (incl. supports, thimbles, etc.)	EZ-Seal 3-inch	Z-Vent 3-inch
Boiler adapter (adapts from Heat-fab to Z-vent piping)	Not required	2VSHTA03
Termination elbow	9314TERM	2SVSTEX0390
Termination pipe section (1 ft)	9302	2SVEPWCF0301
Termination thimble	9393S	2SVSWTE03
Gear clamp (hose clamp)	3-inch clamp	7HS44XX
Joint sealant, as needed	GE RTV106 or equivalent	
Air components	Heat-Fab	Z-Flex
Termination elbow	Same as vent termination	
Air piping/components (also supports, thimbles, etc.)	3-inch PVC, CPVC, ABS, galvanized or aluminum	



See pages 18 – 21

3 Vent & air piped through the roof (separate vent and air terminations)

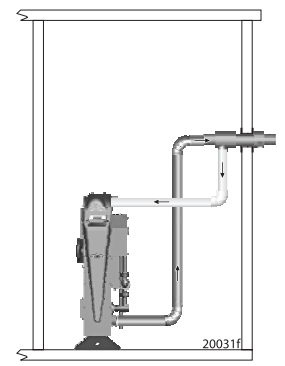
Vent components	Heat-Fab	Z-Flex
Vent piping/components (incl. supports, thimbles, etc.)	EZ-Seal 3-inch	Z-Vent 3-inch
Boiler adapter (adapts from Heat-fab to Z-vent piping)	Not required	2VSHTA03
Rain cap vent termination	5300CI	2SVSRCF03
Joint sealant, as needed	GE RTV106 or equivalent	
Air components	Heat-Fab	Z-Flex
Rain cap termination	5300CI	2SVSRCF03
Termination pipe section (3 ft)	9307	2SVEPWCF0303
Note 1: Standard air piping termination pipe section is 3 feet. A longer length can be used if needed.		
Air piping/components (incl. supports, thimbles, etc.)	3-inch PVC, CPVC, ABS, galvanized or aluminum	



See pages 10 – 13

6 Vent & air piped through a side wall (concentric vent/air termination)

Vent components	Heat-Fab
Vent piping/components (incl. supports, thimbles, etc.)	EZ-Seal, 3-inch piping Saf-T Vent SC fittings for termination assembly
Termination assembly:	SC03ADEZ SC03TAD3 SC03L6 SC03L12 SC03F5 SC03HT 9390
• Single-wall adapter	
• Air intake tee	
• 6-inch straight section or 12-inch straight section	
• Wall plate (2 required)	
• Termination adapter	
• Mitered termination	
Joint sealant, as needed	GE RTV106 or equivalent
Air components	Heat-Fab
Air piping/components (also supports, thimbles, etc.)	3-inch PVC, CPVC, ABS, galvanized or aluminum



See pages 22 – 25



1 Vent piped through the roof (combustion air from the boiler room)

Read before proceeding

WARNING The vent piping operates with positive pressure. The vent piping must be completely sealed and securely supported.

Use only the vent components listed in this manual. Use of any other materials could result in vent system failure.

Exposed vent pipe poses a potential burn hazard to people and pets. Insulate or shield the pipe where necessary to prevent risk.

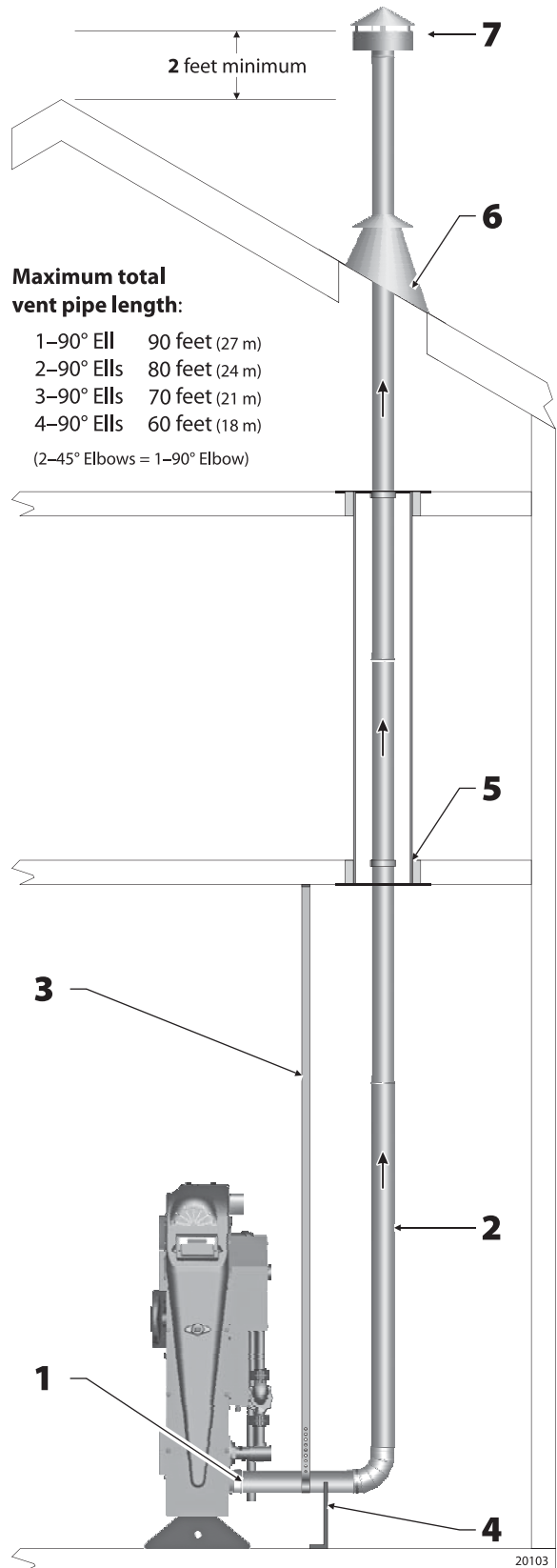
Never drill through, or install screws into, the vent pipe or vent components.

Failure to properly install the vent piping could result in flue gas leakage, causing possible severe personal injury, death or substantial property damage.

NOTICE Code compliance — Follow all applicable local codes when installing the vent system. Where codes differ from this manual, follow code requirements. Contact Mestek if you have any questions regarding the installation.

WARNING Terminate the vent following the guidelines in this manual. Avoid vent termination locations likely to be affected by winds, snowdrifts, people and pets. Protect building materials and vegetation from degradation caused by the flue gases and condensation.

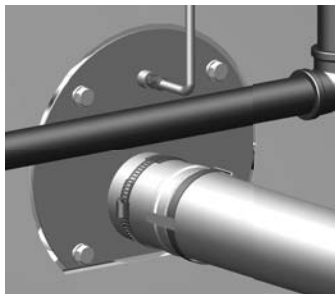
Figure 1 Vertical venting



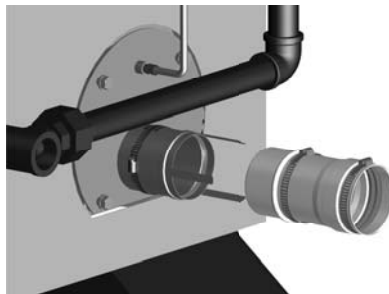
Vent piping (see Figure 1)

1 — Boiler vent connection

- The vent connection at the boiler is for 3-inch Heat-Fab EZ-Seal vent piping only. To use Z-Flex Z-Vent venting you must install the Z-Vent adapter, part number 2SVSHTA03.



EZ-Seal vent attachment



Z-Vent adapter installation

EZ-Seal connection: Insert EZ-Seal pipe male end into the boiler connection. Make sure the locking tabs slide under the EZ-Seal locking ring. Bend back locking tabs to complete the joint. Follow EZ-Seal instructions to complete the vent piping installation.

Z-Vent adapter installation: Insert male end of adapter into boiler vent connection. Make sure the locking tabs slide under the gear clamp on the adapter. Bend back the locking tabs (as in left illustration above). Then tighten the adapter gear clamp to finish the connection. Follow Z-Vent instructions to connect Z-Vent piping.



1 Vent piped through the roof (combustion air from the boiler room) (cont.)

- ❑ **Slope horizontal runs toward the boiler.** All horizontal runs of vent pipe must slope continuously at least ¼ inch per foot (21 mm per meter) to ensure condensate drains completely back to the boiler. **DO NOT** install the vent piping with any sections that could trap condensate.

2 — Vent piping components

- ❑ See Table 1 for acceptable vent components. **NO OTHER** vent materials are acceptable.
- ❑ Carefully follow the instructions supplied by the vent piping manufacturer.
- ❑ The vent joints seal with elastomer rings in the pipe and fittings. Avoid damaging these seals.
- ❑ **Cutting Z-Vent pipe** (Z-Vent only — **DO NOT** cut EZ-Seal pipe) — Length adjustments with Z-Vent pipe can be made by cutting the pipe, following the Z-Vent instructions. Be sure to cut the pipe squarely and to file the cut edge smooth after cutting. Rough pipe ends will damage the seals. Support the pipe when cutting to avoid making the pipe out of round.
- ❑ **Adjustable lengths of EZ-Seal pipe** — Length adjustments with EZ-Seal piping are made with slip-fit adjustable length sections, not by cutting the pipe. Make sure the adjustable length does not jut into elbows or terminations. This could block flue gas and condensate flow.
- ❑ **Maximum vent piping length** — See the table in Figure 3 for the maximum allowable length. Each elbow causes the same pressure drop as 10 feet of vent pipe, so the allowable length reduces 10 feet for each elbow used in the piping. When 45° elbows are used, two 45° elbows are equivalent to one 90° elbow.
- ❑ **Insulate the vent piping where it passes through unheated areas** to prevent condensate freeze-up.
- ❑ If the pipe passes through an occupied space, install a chase around the pipe, following the vent pipe instructions and applicable codes.
- ❑ **Clearance from combustible materials** — Provide minimum clearance to all combustible materials of at least 2 inches (51 mm).
- ❑ **Using an existing chimney as a chase** — The vent piping can be routed through an existing **UNUSED and STRAIGHT chimney**. **DO NOT** vent directly into the chimney. Install the vent piping so it can be inspected after installation. Follow vent pipe manufacturer's instructions for chimney-as-chase installations.

3 & 4 — Support the vent piping completely

- ❑ **DO NOT use the boiler vent connection to support the vent piping.** Provide support straps from the ceiling or noncombustible saddle or pedestal supports from the floor. This is required on **ALL** installations, regardless of the length of the horizontal piping connected to the boiler.
- ❑ Vent piping cannot be supported from above (such as relying on roof jack sections). You must install supports on the horizontal piping before the vent turns upward.
- ❑ **Install at least one support on every horizontal run.** For horizontal runs longer than 5 feet (1.5 m), install a support every 3 feet (0.9 m).
- ❑ Follow the vent pipe manufacturer's instructions for placement and installation of supports.

5 — Floor and wall penetrations

- ❑ Follow applicable codes and the vent pipe instructions to install fire stops, thimbles or other devices at all floor and wall penetrations.
- ❑ Provide minimum 2 inches (51 mm) clearance to all combustible construction.

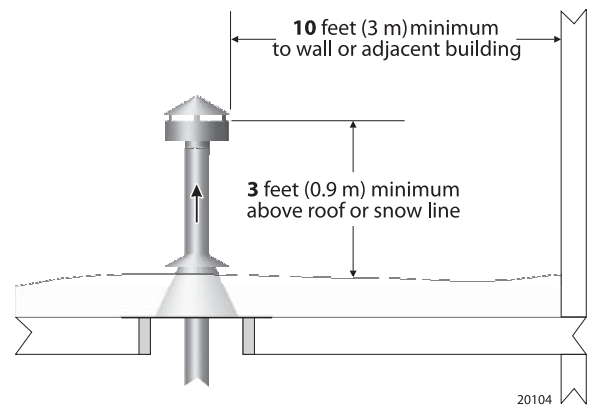
6 — Roof penetrations

- ❑ Follow applicable codes and the vent pipe instructions to install a roof jack, flashing and support. Long extensions of vent pipe above the roof may require the use of guy supports as specified in the vent pipe instructions.

Table 1 Vent system components

Vent components	Heat-Fab	Z-Flex
Vent piping/components (incl. supports, thimbles, etc.)	EZ-Seal 3-inch	Z-Vent 3-inch
Boiler adapter (adapts from EZ-Seal to Z-Vent piping)	Not required	2SVSHTA03
Rain cap termination	5300CI	2SVSRCF03
Joint sealant, as needed	GE RTV106 or equivalent	

Figure 2 Vent termination minimum clearances



7 — Rain cap termination

- ❑ Use only the rain caps listed in Table 1.
- ❑ The rain cap exhaust opening must be at least 2 feet (0.6 m) above the highest roof point within 10 feet, as shown in Figure 1. See the National Fuel Gas Code, ANSI/NFPA 54 for details on pitched roof applications.
- ❑ See Figure 2 for additional minimum clearances.

Combustion air openings

- ❑ Combustion air must be supplied from the boiler room as shown in Figure 1. Make sure the installation provides air openings as required by applicable codes and the Boiler manual.

Multiple boiler installations

- ❑ Each boiler must be individually vented. **DO NOT** use combined venting.
- ❑ Install multiple vents through the roof following all guidelines for single-vent installations.
- ❑ Install the vents so they are no closer than 12 inches on centers.



2 Vent piped through the roof (air piped through side wall)

Read before proceeding

WARNING The vent piping operates with positive pressure. The vent piping must be completely sealed and securely supported.

Use only the vent components listed in this manual. Use of any other materials could result in vent system failure.

Exposed vent pipe poses a potential burn hazard to people and pets. Insulate or shield the pipe where necessary to prevent risk.

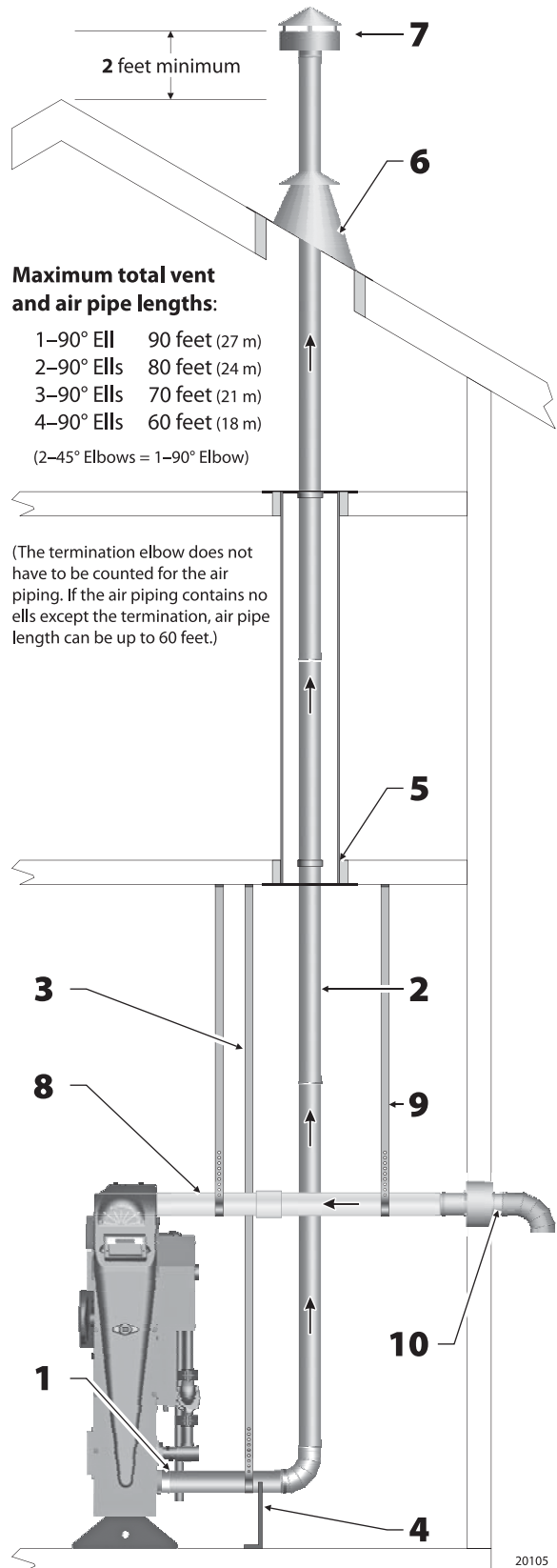
Never drill through, or install screws into, the vent pipe or vent components.

Failure to properly install the vent piping could result in flue gas leakage, causing possible severe personal injury, death or substantial property damage.

NOTICE Code compliance — Follow all applicable local codes when installing the vent system. Where codes differ from this manual, follow code requirements. Contact Mestek if you have any questions regarding the installation.

WARNING Terminate the vent and air piping following the guidelines in this manual. Avoid vent termination locations likely to be affected by winds, snowdrifts, people and pets. Protect building materials and vegetation from degradation caused by the flue gases and condensation.

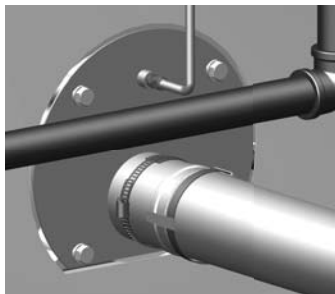
Figure 3 Vertical venting/sidewall air



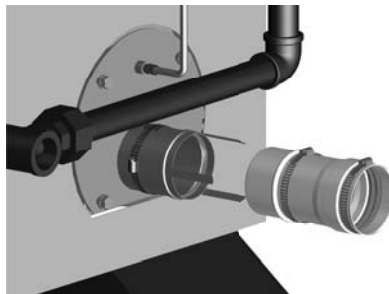
Vent piping (see Figure 3)

1 — Boiler vent connection

- The vent connection at the boiler is for 3-inch Heat-Fab EZ-Seal vent piping only. To use Z-Flex Z-Vent venting you must install the Z-Vent adapter, part number 2SVSHTA03.



EZ-Seal vent attachment



Z-Vent adapter attachment

EZ-Seal connection: Insert EZ-Seal pipe male end into the boiler connection. Make sure the locking tabs slide under the EZ-Seal locking ring. Bend back locking tabs to complete the joint. Follow EZ-Seal instructions to complete the vent piping installation.

Z-Vent adapter installation: Insert male end of adapter into boiler vent connection. Make sure the locking tabs slide under the gear clamp on the adapter. Bend back the locking tabs (as in left illustration above). Then tighten the adapter gear clamp to finish the connection. Follow Z-Vent instructions to connect Z-Vent piping.



2 Vent piped through the roof (air piped through side wall) (continued)

- ❑ **Slope horizontal runs toward the boiler.** All horizontal runs of vent pipe must slope continuously at least ¼ inch per foot (21 mm per meter) to ensure condensate drains completely back to the boiler. DO NOT install the vent piping with any sections that could trap condensate.

2 — Vent piping components

- ❑ See Table 2 for acceptable vent components. **NO OTHER** vent materials are acceptable.
- ❑ Carefully follow the instructions supplied by the vent piping manufacturer.
- ❑ The vent joints seal with elastomer rings in the pipe and fittings. Avoid damaging these seals.
- ❑ **Cutting Z-Vent pipe** (Z-Vent only — DO NOT cut EZ-Seal pipe) — Length adjustments with Z-Vent pipe can be done by cutting the pipe, following the Z-Vent instructions. Be sure to cut the pipe squarely and to file the cut edge smooth after cutting. Rough pipe ends will damage the seals. Support the pipe when cutting to avoid making the pipe out of round.
- ❑ **Adjustable lengths of EZ-Seal pipe** — Length adjustments with EZ-Seal piping are done with slip-fit adjustable length sections, not by cutting the pipe. Make sure the adjustable length does not jut into elbows or terminations. This could block flue gas and condensate flow.
- ❑ **Maximum vent piping length** — See the table in Figure 3 for the maximum allowable length. Each elbow causes the same pressure drop as 10 feet of vent pipe, so the allowable length reduces 10 feet for each elbow used in the piping. When 45° elbows are used, two 45° elbows are equivalent to one 90° elbow.
- ❑ **Insulate the vent piping where it passes through unheated areas** to prevent condensate freeze-up.
- ❑ If the pipe passes through an occupied space, install a chase around the pipe, following the vent pipe instructions and applicable codes.
- ❑ **Clearance from combustible materials** — Provide minimum clearance to all combustible materials of at least 2 inches (51 mm).
- ❑ **Using an existing chimney as a chase** — The vent piping can be routed through an existing STRAIGHT chimney. DO NOT vent directly into the chimney. Install the vent piping so it can be inspected after installation. Follow vent pipe manufacturer's instructions for chimney-as-chase installations.

3 & 4 — Support the vent piping completely

- ❑ **DO NOT use the boiler vent connection to support the vent piping.** Provide support straps from the ceiling or noncombustible saddle or pedestal supports from the floor. This is required on ALL installations, regardless of the length of the horizontal piping connected to the boiler.
- ❑ **Install at least one support on every horizontal run.** For horizontal runs longer than 5 feet (1.5 m), install a support every 3 feet (0.9 m).
- ❑ Vent piping cannot be supported from above (such as relying on roof jack sections). You must install supports on the horizontal piping before the vent turns upward. Provide a support on the horizontal piping **within 6 inches of every up-turned elbow** to support the vertical run.
- ❑ Follow the vent pipe manufacturer's instructions for placement and installation of supports.

5 — Floor and wall penetrations

- ❑ Follow applicable codes and the vent pipe instructions to install fire stops, thimbles or other devices at all floor and wall penetrations.
- ❑ Provide minimum 2 inches (51 mm) clearance to all combustible construction.

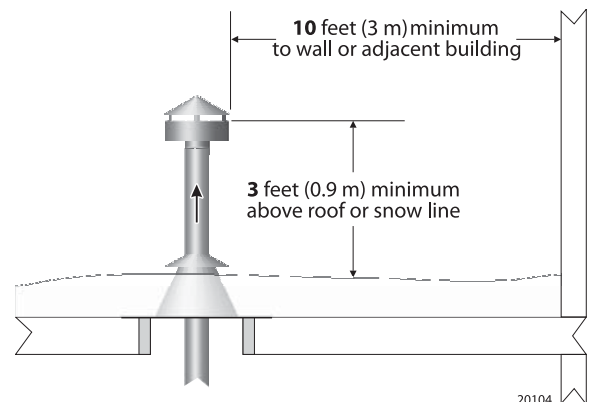
6 — Roof penetrations

- ❑ Follow applicable codes and the vent pipe instructions to install a roof jack, flashing and support. Long extensions of vent pipe above the roof may require the use of guy supports as specified in the vent pipe instructions.

Table 2 Vent and air system components

Vent components	Heat-Fab	Z-Flex
Vent piping/components (incl. supports, thimbles, etc.)	EZ-Seal 3-inch	Z-Vent 3-inch
Boiler adapter (adapts from Heat-fab to Z-vent piping)	Not required	2SVSHTA03
Joint sealant, as needed	GE RTV106 or equivalent	
Rain cap vent termination	5300CI	2SVSRCF03
Air components	Heat-Fab	Z-Flex
Termination elbow	9314TERM	2SVSTEX0390
Termination pipe section <small>(note 1)</small>	9302	2SVPEWCF0301
Termination thimble	9393S	2SVSWTE03
Gear clamp (hose clamp)	3-inch hose clamp	7HS44XX (or 3" hose clp.)
Air piping/components (also supports, thimbles, etc.)	3-inch PVC, CPVC, ABS, galvanized or aluminum	
<small>Note 1: Standard termination pipe section is 1 foot. A longer length can be used if needed.</small>		

Figure 4 Vent termination minimum clearances



20104

7 — Rain cap termination

- ❑ Use only the rain caps listed in Table 2.
- ❑ The rain cap exhaust opening must be at least 2 feet (0.6 m) above the highest roof point within 10 feet, as shown in Figure 3. See the National Fuel Gas Code, ANSI/NFPA 54 for details on pitched roof applications.
- ❑ See Figure 4 for additional minimum clearances.



2 Vent piped through the roof (air piped through side wall) (continued)

Combustion air must be uncontaminated

WARNING **Construction dust:** If the boiler is operated while the building is under construction it must be protected from wood, concrete, sheet rock and other types of dust. Failure to properly protect the boiler from construction dust will damage the boiler.

Combustion air contaminated with fluorocarbons or other halogenated compounds, such as laundry products, cleaning solvents and refrigerants will result in the formation of acids in the combustion chamber and vent piping. These acids will cause premature failure of the boiler and vent, causing possible severe personal injury, death or substantial property damage.

If the boiler room, or any room through which the air piping travels, may contain **contaminants** as listed above, you **MUST seal air pipe joints with silicone RTV** to prevent contaminants from entering the boiler combustion air. The finished air piping installation must be air-tight and water-tight.

Air piping (see Figure 3)

8 — Air pipe connection

- Before installing the air piping, install the air pipe sidewall termination assembly (item 10, Figure 3). See instructions following.
- Construct the air piping from 3-inch PVC, CPVC or ABS plastic, or 3-inch galvanized or aluminum metallic pipe (including flexible aluminum duct if desired).

NOTICE When using metallic piping — seal all of the longitudinal seam joints in addition to the component joints.

- Attach the air piping to the boiler air connection, preferably using silicone RTV to seal the connection. If the boiler room air is free of contaminants you can use metallic duct tape to seal the joints. With age, however, duct tape adhesives can loosen, so duct tape is not as reliable as silicone RTV.
- If the installation is required to meet direct vent (sealed combustion) requirements, seal all joints with the silicone RTV. The air pipe installation must be air-tight and water-tight.
- Maximum air piping length** — See the table in Figure 3, page 6, for the maximum allowable length. Each elbow causes the same pressure drop as 10 feet of vent pipe, so the allowable length reduces 10 feet for each elbow used in the piping. When 45° elbows are used, two 45° elbows are equivalent to one 90° elbow.

9 — Supporting air piping

- DO NOT use the boiler air connection to support the air piping.** Provide support straps from the ceiling or install wall brackets.
- Provide at least one support on all air pipe installations.
- Provide a support every 3 feet for air pipe lengths greater than 5 feet horizontally.
- Provide a support on the horizontal piping within 6 inches of every upturned elbow to support the vertical run.

10 — Air pipe termination (see Figure 5)

- See Table 2 for part numbers of the sidewall termination components required for Z-Vent and EZ-Seal air pipe installations. The air piping termination must be con-

Figure 3 (partially repeated from page 6)

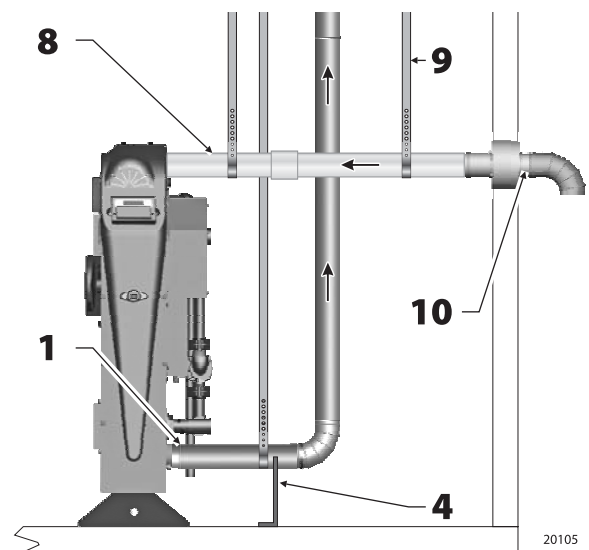
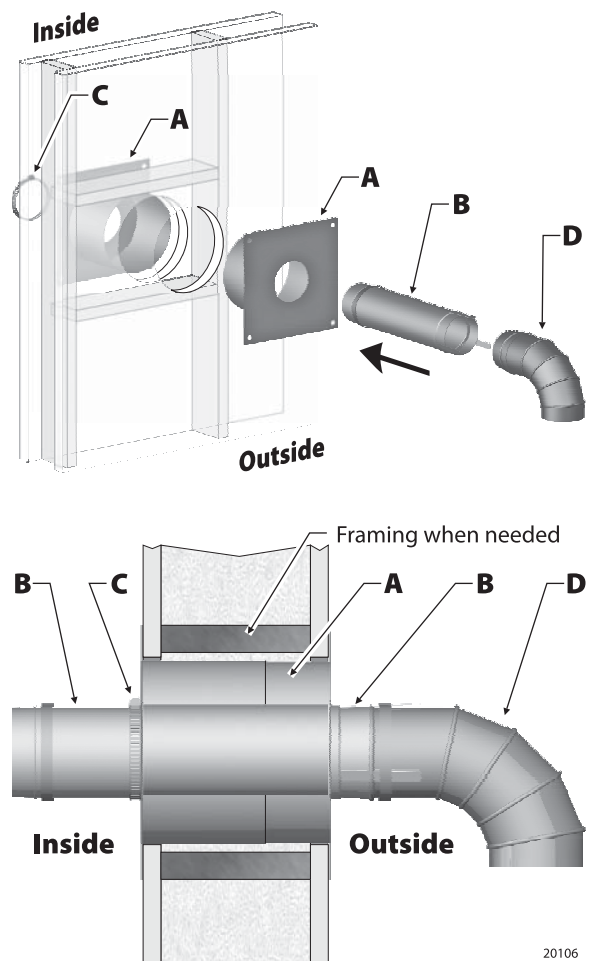


Figure 5 Sidewall air pipe termination assembly





2 Vent piped through the roof (air piped through side wall) (continued)

structed using the stainless steel vent materials listed in Table 2 to ensure the configuration is correct. **DO NOT** terminate the air piping with any other method.

Termination assembly components:

A. Wall thimble — Use only the thimble listed in Table 2. The hole in the thimble will prevent the pipe length (B) from being pushed inward. The raised portion of the pipe female end is too large to pass through the hole in the thimble. Follow the vent pipe manufacturer's instructions supplied with the thimble. If the wall thimble isn't long enough for the application, follow the vent manufacturer's instructions to add an extension.

Alternate construction — The air pipe can be inserted through a 3½-inch hole without using a thimble. For this option, **attach a storm collar on both the inside and outside walls at the penetration.** Before attaching the collars, seal around the air pipe thoroughly with silicone RTV to prevent air leakage or insect access. The storm collar tightens around the vent pipe with a gear clamp. This prevents movement of the finished assembly. You will still need to use the length of vent pipe and the termination elbow described below. Storm collar part numbers are 4326SS for EZ-Seal or 2SVLSF03 for Z-Vent.

B. Length of vent pipe — Use a 1-foot length of vent pipe as listed in Table 2 unless the wall penetration requires a longer length. If a longer length is required, use a length of EZ-Seal or Z-Vent long enough for the application.

Insert the pipe from **OUTSIDE**, male end first. The pipe will stop at the raised section of the female end.

C. Gear clamp — Use a 3-inch hose clamp or a gear clamp manufactured by the vent manufacturer (see Table 2).

Slide the clamp over the male end of the pipe after the pipe has been inserted from outside.

From the inside, pull the pipe so it is firmly against the outside plate.

Push the gear clamp against the inside plate and tighten securely. This will prevent the termination assembly from being pushed outward.

D. Termination elbow — Use only the termination elbow listed in Table 2. The elbow must be pointed downward.

Before inserting the male end of the elbow into the pipe, apply a bead of silicone RTV and spread around the end.

Insert the termination elbow and secure using the vent pipe manufacturer's joint assembly procedure.

Termination location — Install the air pipe termination where it meets the minimum clearances shown in Figure 6.

Appliance exhaust outlets — Install the air intake at least 2 feet below and 5 feet horizontally from any appliance vent outlet.

Exiting below grade or minimum height — See Figure 7. When the air pipe must exit the building below grade or below the minimum height for the termination elbow, install vertical piping as necessary for the termination elbow to be high enough to meet the minimum clearances of Figure 6. Make sure to support the piping using wall brackets available from the vent pipe manufacturer.

Figure 6 Minimum clearances to air termination

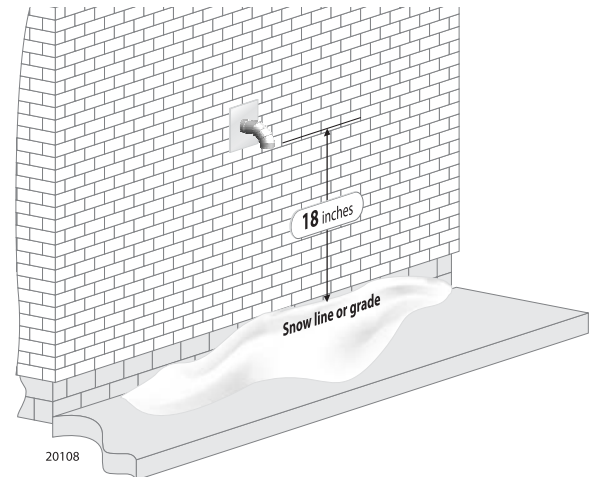
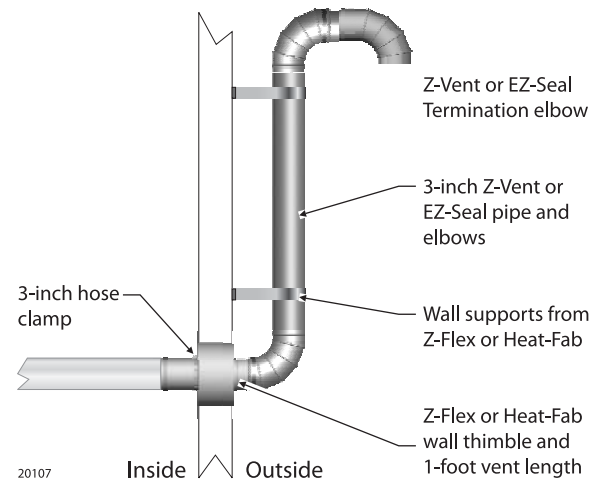


Figure 7 Using external piping to raise the termination



Multiple boiler installations

Venting multiple boilers

- Each boiler must be individually vented. **DO NOT** use combined venting.
- Install multiple vents through the roof following all guidelines for single-vent installations.
- Install the vents so they are no closer than 12 inches on centers.

Air piping for multiple boilers

- Air for each boiler must be individually piped. **DO NOT** use combined air piping.
- Install multiple air pipes through the side wall following all guidelines for single-air pipe installations.
- Install the terminations so they are no closer than 12 inches on centers.



3 Vent and air piped through the roof (separate terminations)

Read before proceeding

WARNING The vent piping operates with positive pressure. The vent piping must be completely sealed and securely supported.

Use only the vent components listed in this manual. Use of any other materials could result in vent system failure.

Exposed vent pipe poses a potential burn hazard to people and pets. Insulate or shield the pipe where necessary to prevent risk.

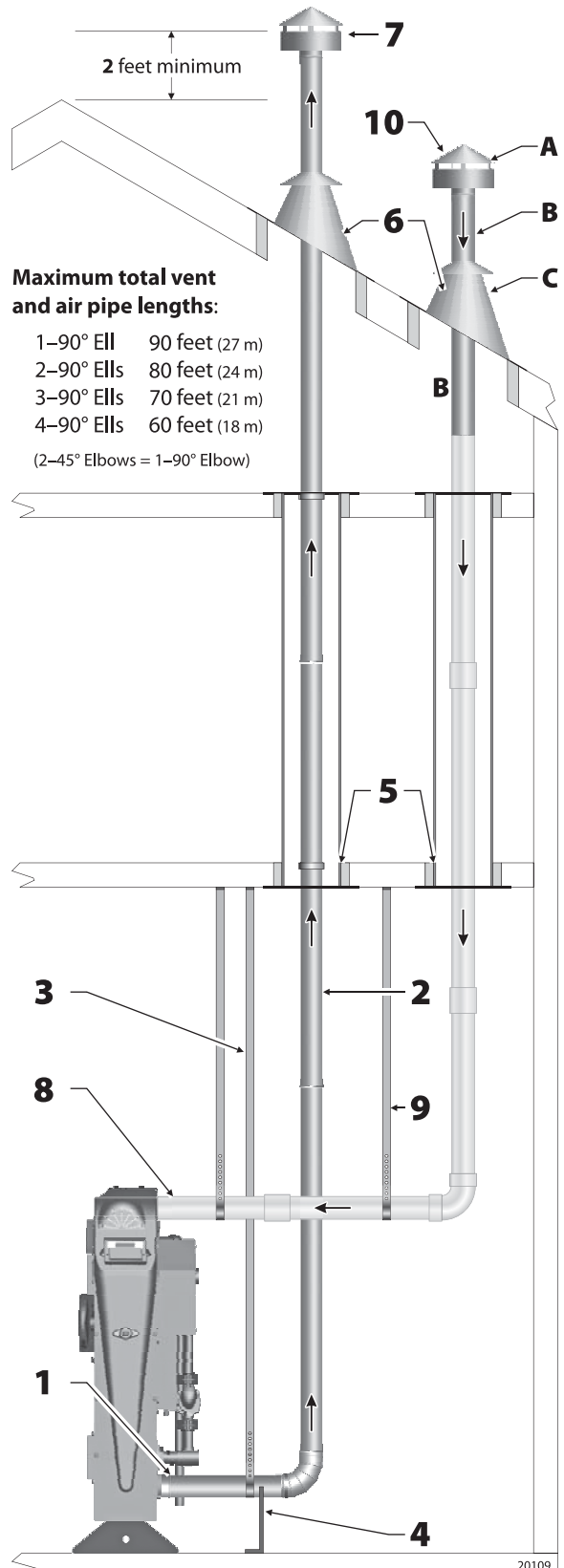
Never drill through, or install screws into, the vent pipe or vent components.

Failure to properly install the vent piping could result in flue gas leakage, causing possible severe personal injury, death or substantial property damage.

NOTICE Code compliance — Follow all applicable local codes when installing the vent system. Where codes differ from this manual, follow code requirements. Contact Mestek if you have any questions regarding the installation.

WARNING Terminate the vent and air piping following the guidelines in this manual. Avoid vent termination locations likely to be affected by winds, snowdrifts, people and pets. Protect building materials and vegetation from degradation caused by the flue gases and condensation.

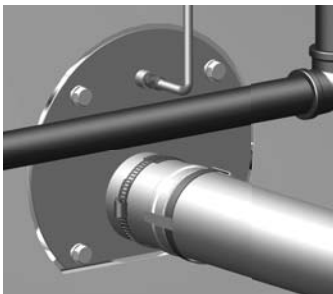
Figure 8 Vertical venting/sidewall air



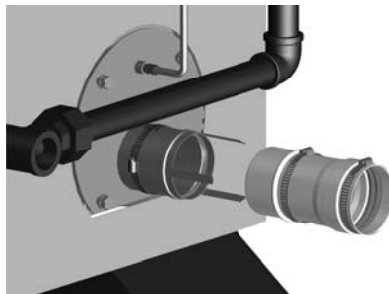
Vent piping (see Figure 8)

1 — Boiler vent connection

- The vent connection at the boiler is for 3-inch Heat-Fab EZ-Seal vent piping only. To use Z-Flex Z-Vent venting you must install the Z-Vent adapter, part number 2SVSHTA03.



EZ-Seal vent attachment



Z-Vent adapter attachment

EZ-Seal connection: Insert EZ-Seal pipe male end into the boiler connection. Make sure the locking tabs slide under the EZ-Seal locking ring. Bend back locking tabs to complete the joint. Follow EZ-Seal instructions to complete the vent piping installation.

Z-Vent adapter installation: Insert male end of adapter into boiler vent connection. Make sure the locking tabs slide under the gear clamp on the adapter. Bend back the locking tabs (as in left illustration above). Then tighten the adapter gear clamp to finish the connection. Follow Z-Vent instructions to connect Z-Vent piping.



3 Vent and air piped through the roof (separate terminations) (continued)

- ❑ **Slope horizontal runs toward the boiler.** All horizontal runs of vent pipe must slope continuously at least ¼ inch per foot (21 mm per meter) to ensure condensate drains completely back to the boiler. **DO NOT** install the vent piping with any sections that could trap condensate.

2 — Vent piping components

- ❑ See Table 3 for acceptable vent components. **NO OTHER** vent materials are acceptable.
- ❑ Carefully follow the instructions supplied by the vent piping manufacturer.
- ❑ The vent joints seal with elastomer rings in the pipe and fittings. Avoid damaging these seals.
- ❑ **Cutting Z-Vent pipe** (Z-Vent only — **DO NOT** cut EZ-Seal pipe) — Length adjustments with Z-Vent pipe can be done by cutting the pipe, following the Z-Vent instructions. Be sure to cut the pipe squarely and to file the cut edge smooth after cutting. Rough pipe ends will damage the seals. Support the pipe when cutting to avoid making the pipe out of round.
- ❑ **Adjustable lengths of EZ-Seal pipe** — Length adjustments with EZ-Seal piping are done with slip-fit adjustable length sections, not by cutting the pipe. Make sure the adjustable length does not jut into elbows or terminations. This could block flue gas and condensate flow.
- ❑ **Maximum vent piping length** — See the table in Figure 8 for the maximum allowable length. Each elbow causes the same pressure drop as 10 feet of vent pipe, so the allowable length reduces 10 feet for each elbow used in the piping. When 45° elbows are used, two 45° elbows are equivalent to one 90° elbow.
- ❑ **Insulate the vent piping where it passes through unheated areas** to prevent condensate freeze-up.
- ❑ If the pipe passes through an occupied space, install a chase around the pipe, following the vent pipe instructions and applicable codes.
- ❑ **Clearance from combustible materials** — Provide minimum clearance to all combustible materials of at least 2 inches (51 mm).
- ❑ **Using an existing chimney as a chase** — The vent piping and air piping can be routed through an existing **UNUSED and STRAIGHT chimney**. **DO NOT** vent directly into the chimney. Install the vent piping so it can be inspected after installation. Follow vent pipe manufacturer's instructions for chimney-as-chase installations.

3 & 4 — Support the vent piping completely

- ❑ **DO NOT use the boiler vent connection to support the vent piping.** Provide support straps from the ceiling or noncombustible saddle or pedestal supports from the floor. This is required on ALL installations, regardless of the length of the horizontal piping connected to the boiler.
- ❑ **Install at least one support on every horizontal run.** For horizontal runs longer than 5 feet (1.5 m), install a support every 3 feet (0.9 m).
- ❑ Vent piping cannot be supported from above (such as relying on roof jack sections). You must install supports on the horizontal piping before the vent turns upward. Provide a support on the horizontal piping **within 6 inches of every up-turned elbow** to support the vertical run.
- ❑ Follow the vent pipe manufacturer's instructions for placement and installation of supports.

5 — Floor and wall penetrations

- ❑ Follow applicable codes and the vent pipe instructions to install fire stops, thimbles or other devices at all floor and wall penetrations.
- ❑ Provide minimum 2 inches (51 mm) clearance to all combustible construction.

6 — Roof penetrations

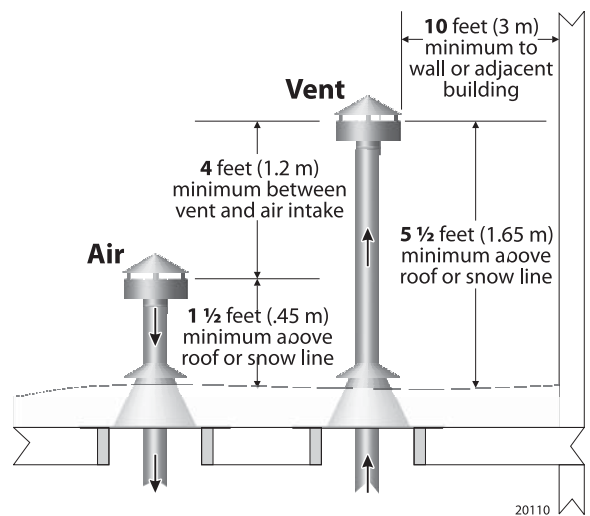
- ❑ Follow applicable codes and the vent pipe instructions to install a roof jack, flashing and support. Long extensions of vent pipe above the roof may require the use of guy supports as specified in the vent pipe instructions.

Table 3 Vent and air system components

Vent components	Heat-Fab	Z-Flex
Vent piping/components (incl. supports, thimbles, etc.)	EZ-Seal 3-inch	Z-Vent 3-inch
Boiler adapter (adapts from Heat-fab to Z-vent piping)	Not required	2SVSHTA03
Rain cap vent termination	5300CI	2SVSRCF03
Air components	Heat-Fab	Z-Flex
Rain cap air termination	5300CI	2SVSRCF03
Termination pipe section <small>(note 1)</small>	9307	2SVEPWCF0303
Air piping/components (incl. supports, thimbles, etc.)	3-inch PVC, CPVC, ABS, galvanized or aluminum	

Note 1: Standard termination pipe section is 3 feet. A longer length can be used if needed.

Figure 9 Termination minimum clearances



7 — Rain cap termination

- ❑ Use only the rain caps listed in Table 3.
- ❑ The rain cap exhaust opening must be at least 2 feet (0.6 m) above the highest roof point within 10 feet, as shown in Figure 8. See the National Fuel Gas Code, ANSI/NFPA 54 for details on pitched roof applications.
- ❑ See Figure 9 for additional minimum clearances. The vent must always terminate at least 4 feet (1.2 m) above the air intake termination.



3 Vent and air piped through the roof (separate terminations)

Combustion air must be uncontaminated

WARNING **Construction dust:** If the boiler is operated while the building is under construction it must be protected from wood, concrete, sheet rock and other types of dust. Failure to properly protect the boiler from construction dust will damage the boiler.

Combustion air contaminated with fluorocarbons or other halogenated compounds, such as laundry products, cleaning solvents and refrigerants will result in the formation of acids in the combustion chamber and vent piping. These acids will cause premature failure of the boiler and vent, causing possible severe personal injury, death or substantial property damage.

If the boiler room, or any room through which the air piping travels, may contain **contaminants** as listed above, you **MUST seal air pipe joints with silicone RTV** to prevent contaminants from entering the boiler combustion air. The finished air piping installation must be air-tight and water-tight.

Air piping (see Figure 3)

8 — Air pipe connection

- ❑ Construct the air piping from 3-inch PVC, CPVC or ABS plastic, or 3-inch galvanized or aluminum metallic pipe (including flexible aluminum duct if desired).

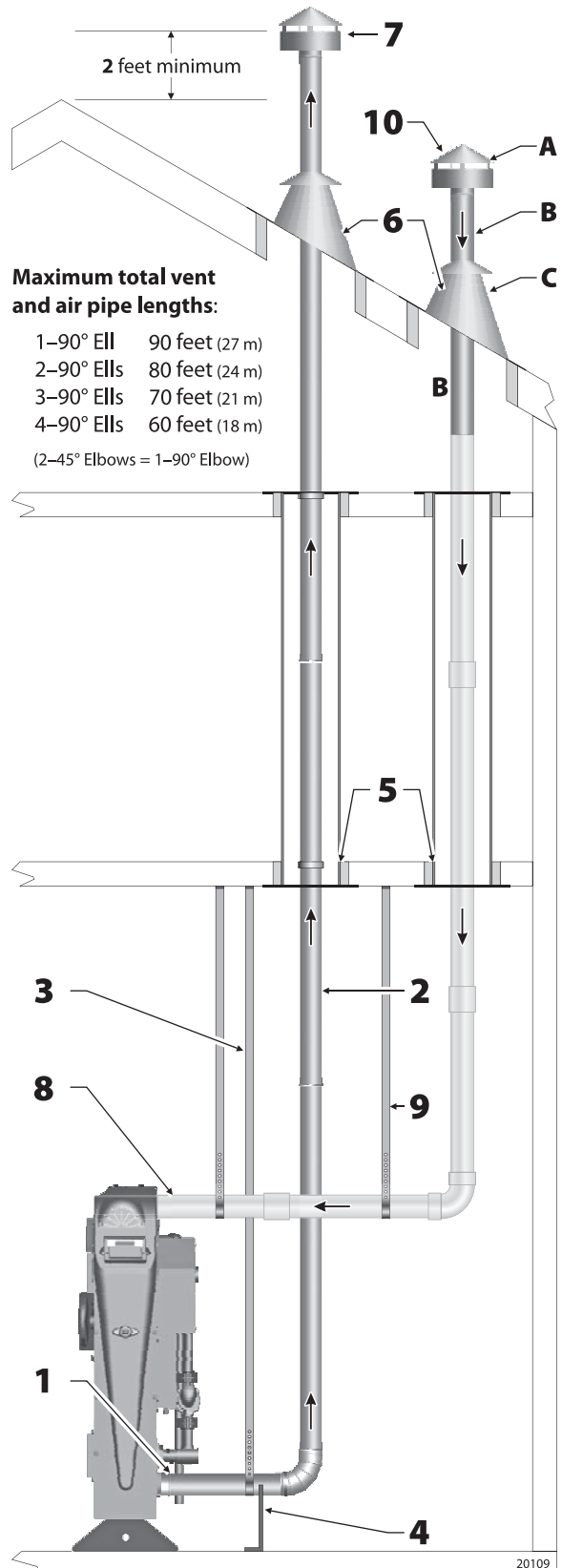
NOTICE When using metallic piping — seal all of the longitudinal seam joints in addition to the component joints.

- ❑ Attach the air piping to the boiler air connection, preferably using silicone RTV to seal the connection. If the boiler room air is free of contaminants you can use metallic duct tape to seal the joints. With age, however, duct tape adhesives can loosen, so duct tape is not as reliable as silicone RTV.
- ❑ If the installation is required to meet direct vent (sealed combustion) requirements, seal all joints with silicone RTV. The air pipe installation must be air-tight and water-tight.
- ❑ The air piping connects to the stainless steel pipe section attached to the air intake rain cap termination (item 10, Figure 8). See instructions following.
- ❑ **Maximum air piping length** — See the table in Figure 8 for the maximum allowable length. Each elbow causes the same pressure drop as 10 feet of vent pipe, so the allowable length reduces 10 feet for each elbow used in the piping. When 45° elbows are used, two 45° elbows are equivalent to one 90° elbow.

9 — Supporting air piping

- ❑ **DO NOT use the boiler air connection to support the air piping.** Provide support straps from the ceiling or install wall brackets.
- ❑ Provide at least one support on all air pipe installations.
- ❑ Provide a support every 3 feet for air pipe lengths greater than 5 feet horizontally.
- ❑ Provide a support on the horizontal piping within 6 inches of every upturned elbow to support the vertical run.

Figure 8 (repeated from page 10)



20109



3 Vent and air piped through the roof (separate terminations) (continued)

10 — Air pipe termination (see Figure 8)

- ❑ See Table 3 for part numbers of the vertical termination components required for Z-Vent and EZ-Seal air pipe installations. The air piping termination must be constructed using the stainless steel vent materials listed in Table 3 to ensure the configuration is correct. **DO NOT** terminate the air piping with any other method.
- ❑ Termination assembly components:
 - A. Rain cap** — Use only the rain cap listed in Table 3, the same cap as used on the vent termination.
Install the rain cap so it meets the minimum clearances shown in Figure 9, page 11.
 - B. Length of vent pipe** — Use a 3-foot length of vent pipe as listed in Table 3 unless the roof penetration requires a longer length to meet minimum clearances. If a longer length is required, use a length of EZ-Seal or Z-Vent long enough for the application.
Attach the air piping to the male end (bottom end) of the stainless steel pipe.
 - C. Roof penetration components** — Use the same components as used for the vent penetration.

Multiple boiler installations

Venting multiple boilers

- ❑ Each boiler must be individually vented. **DO NOT** use combined venting.
- ❑ Install multiple vents through the roof following all guidelines for single-vent installations.
- ❑ Install the vents so they are no closer than 12 inches on centers.
- ❑ Provide minimum 5 feet between the center line of any vent termination and any air intake termination.

Air piping for multiple boilers

- ❑ Air for each boiler must be individually piped. **DO NOT** use combined air piping.
- ❑ Install multiple air pipes through the side wall following all guidelines for single-air pipe installations.
- ❑ Install the terminations so they are no closer than 12 inches on centers.
- ❑ Provide minimum 5 feet between the center line of any vent termination and any air intake termination.



4 Vent piped through a side wall (combustion air from the boiler room)

Read before proceeding

WARNING The vent piping operates with positive pressure. The vent piping must be completely sealed and securely supported.

Use only the vent components listed in this manual. Use of any other materials could result in vent system failure.

Exposed vent pipe poses a potential burn hazard to people and pets. Insulate or shield the pipe where necessary to prevent risk.

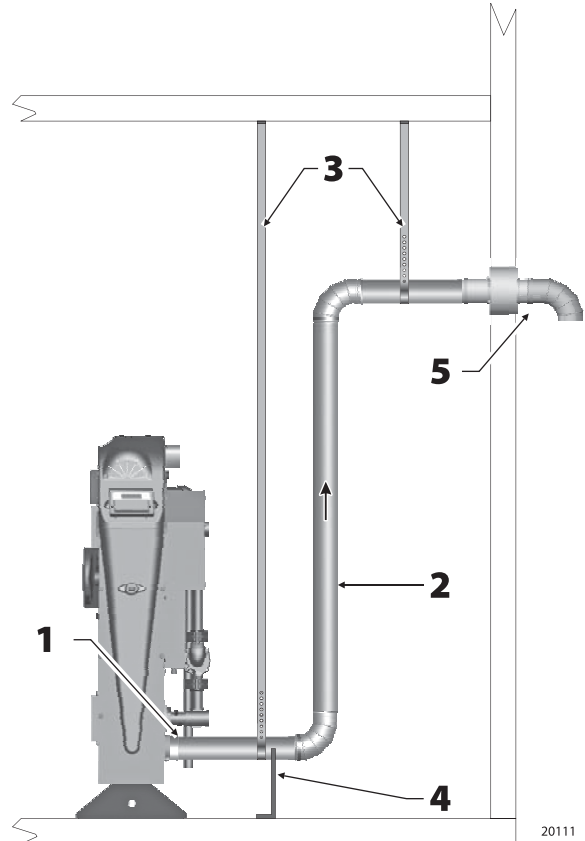
Never drill through, or install screws into, the vent pipe or vent components.

Failure to properly install the vent piping could result in flue gas leakage, causing possible severe personal injury, death or substantial property damage.

NOTICE Code compliance — Follow all applicable local codes when installing the vent system. Where codes differ from this manual, follow code requirements. Contact Mestek if you have any questions regarding the installation.

WARNING Terminate the vent and air piping following the guidelines in this manual. Avoid vent termination locations likely to be affected by winds, snowdrifts, people and pets. Protect building materials and vegetation from degradation caused by the flue gases and condensation.

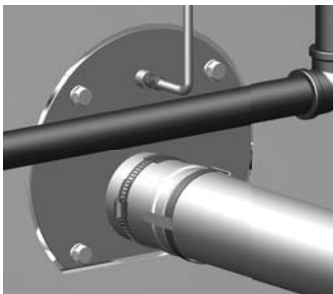
Figure 10 Vertical venting/sidewall air



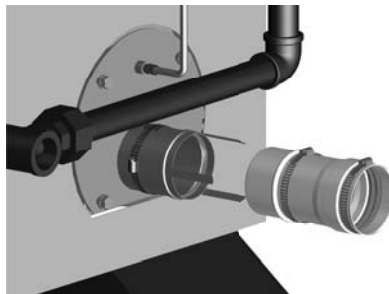
Vent piping (see Figure 10)

1 — Boiler vent connection

- The vent connection at the boiler is for 3-inch Heat-Fab EZ-Seal vent piping only. To use Z-Flex Z-Vent venting you must install the Z-Vent adapter, part number 2SVSHTA03.



EZ-Seal vent attachment



Z-Vent adapter attachment

EZ-Seal connection: Insert EZ-Seal pipe male end into the boiler connection. Make sure the locking tabs slide under the EZ-Seal locking ring. Bend back locking tabs to complete the joint. Follow EZ-Seal instructions to complete the vent piping installation.

Z-Vent adapter installation: Insert male end of adapter into boiler vent connection. Make sure the locking tabs slide under the gear clamp on the adapter. Bend back the locking tabs (as in left illustration above). Then tighten the adapter gear clamp to finish the connection. Follow Z-Vent instructions to connect Z-Vent piping.

Maximum total vent pipe length:

1–90° Ell	90 feet (27 m)
2–90° Ells	80 feet (24 m)
3–90° Ells	70 feet (21 m)
4–90° Ells	60 feet (18 m)
(2–45° Elbows = 1–90° Elbow)	

(The termination elbow does not have to be counted for the vent piping. If the vent piping contains no ells except the termination, vent pipe length can be up to 60 feet.)

Table 4 Vent system components

Vent components	Heat-Fab	Z-Flex
Vent piping/components (incl. supports, thimbles, etc.)	EZ-Seal 3-inch	Z-Vent 3-inch
Boiler adapter (adapts from Heat-fab to Z-vent piping)	Not required	2SVSHTA03
Termination elbow	9314TERM	2SVSTEX0390
Termination pipe section (1 ft)	9302	2SVPEWCF0301
Termination thimble	9393S	2SVSWTE03
Gear clamp (hose clamp)	3-inch clamp	7HS44XX
Joint sealant, as needed	GE RTV106 or equivalent	



4 Vent piped through a side wall (combustion air from the boiler room) (cont.)

- ❑ **Slope horizontal runs toward the boiler.** All horizontal runs of vent pipe must slope continuously at least ¼ inch per foot (21 mm per meter) to ensure condensate drains completely back to the boiler. DO NOT install the vent piping with any sections that could trap condensate.

2 — Vent piping components

- ❑ See Table 4 for acceptable vent components. **NO OTHER** vent materials are acceptable.
- ❑ Carefully follow the instructions supplied by the vent piping manufacturer.
- ❑ The vent joints seal with elastomer rings in the pipe and fittings. Avoid damaging these seals.
- ❑ **Cutting Z-Vent pipe** (Z-Vent only — DO NOT cut EZ-Seal pipe) — Length adjustments with Z-Vent pipe can be done by cutting the pipe, following the Z-Vent instructions. Be sure to cut the pipe squarely and to file the cut edge smooth after cutting. Rough pipe ends will damage the seals. Support the pipe when cutting to avoid making the pipe out of round.
- ❑ **Adjustable lengths of EZ-Seal pipe** — Length adjustments with EZ-Seal piping are done with slip-fit adjustable length sections, not by cutting the pipe. Make sure the adjustable length does not jut into elbows or terminations. This could block flue gas and condensate flow.
- ❑ **Maximum vent piping length** — See the table in Figure 8 for the maximum allowable length. Each elbow causes the same pressure drop as 10 feet of vent pipe, so the allowable length reduces 10 feet for each elbow used in the piping. When 45° elbows are used, two 45° elbows are equivalent to one 90° elbow.
- ❑ **Insulate the vent piping where it passes through unheated areas** to prevent condensate freeze-up. Do not insulate the within 18 inches of the termination when it passes through a combustible wall.
- ❑ If the pipe passes through an occupied space, install a chase around the pipe, following the vent pipe instructions and applicable codes.
- ❑ **Clearance from combustible materials** — Provide minimum clearance to all combustible materials of at least 2 inches (51 mm).

3 & 4 — Support the vent piping completely

- ❑ **DO NOT use the boiler vent connection to support the vent piping.** Provide support straps from the ceiling or noncombustible saddle or pedestal supports from the floor. This is required on ALL installations, regardless of the length of the horizontal piping connected to the boiler.
- ❑ **Install at least one support on every horizontal run.** For horizontal runs longer than 5 feet (1.5 m), install a support every 3 feet (0.9 m).
- ❑ Vent piping cannot be supported from above (such as relying on roof jack sections). You must install supports on the horizontal piping before the vent turns upward. Provide a support on the horizontal piping **within 6 inches of every up-turned elbow** to support the vertical run.
- ❑ Follow the vent pipe manufacturer's instructions for placement and installation of supports.
- ❑ Follow applicable codes and the vent pipe instructions to install fire stops, thimbles or other devices at all floor and wall penetrations.
- ❑ Provide minimum 2 inches (51 mm) clearance to all combustible construction.

continued on next page



4 Vent piped through a side wall (combustion air from the boiler room) (cont.)

5 — Sidewall termination (see Figure 11)

❑ See Table 4 for part numbers of the sidewall termination components required for Z-Vent and EZ-Seal vent pipe installations. The vent termination must be constructed using the stainless steel vent materials listed in Table 4 to ensure the configuration is correct. **DO NOT** terminate the air piping with any other method.

A. Wall thimble — Use only the thimble listed in Table 4. The hole in the thimble will prevent the pipe length (B) from being pushed inward. The raised portion of the pipe female end is too large to pass through the hole in the thimble. Follow the vent pipe manufacturer's instructions supplied with the thimble. If the wall thimble isn't long enough for the application, follow the vent manufacturer's instructions to add an extension.

Noncombustible walls — For noncombustible walls **ONLY**, you can omit the thimble. The vent pipe can be inserted through a 3½-inch hole. For this option, **attach a storm collar on both the inside and outside walls at the penetration.** Before attaching the collars, seal around the vent pipe thoroughly with silicone RTV to prevent air leakage or insect access. The storm collar tightens around the vent pipe with a gear clamp. This prevents movement of the finished assembly. You will still need to use the length of vent pipe and the termination elbow described below. Storm collar part numbers are 4326SS for EZ-Seal or 2SVLSLF03 for Z-Vent.

B. Length of vent pipe — Use a 1-foot length of vent pipe as listed in Table 4 unless the wall penetration requires a longer length. If a longer length is required, use a length of EZ-Seal or Z-Vent long enough for the application.

Insert the pipe from **OUTSIDE**, male end first. The pipe will stop at the raised section of the female end.

C. Gear clamp — Use a 3-inch hose clamp or a gear clamp manufactured by the vent manufacturer (see Table 4).

Slide the clamp over the male end of the pipe after the pipe has been inserted from outside.

From the inside, pull the pipe so it is firmly against the outside plate.

Push the gear clamp against the inside plate and tighten securely. This will prevent the termination assembly from being pushed outward.

D. Termination elbow — Use only the termination elbow listed in Table 4. The elbow must be pointed downward.

Before inserting the male end of the elbow into the pipe, apply a bead of silicone RTV and spread around the end.

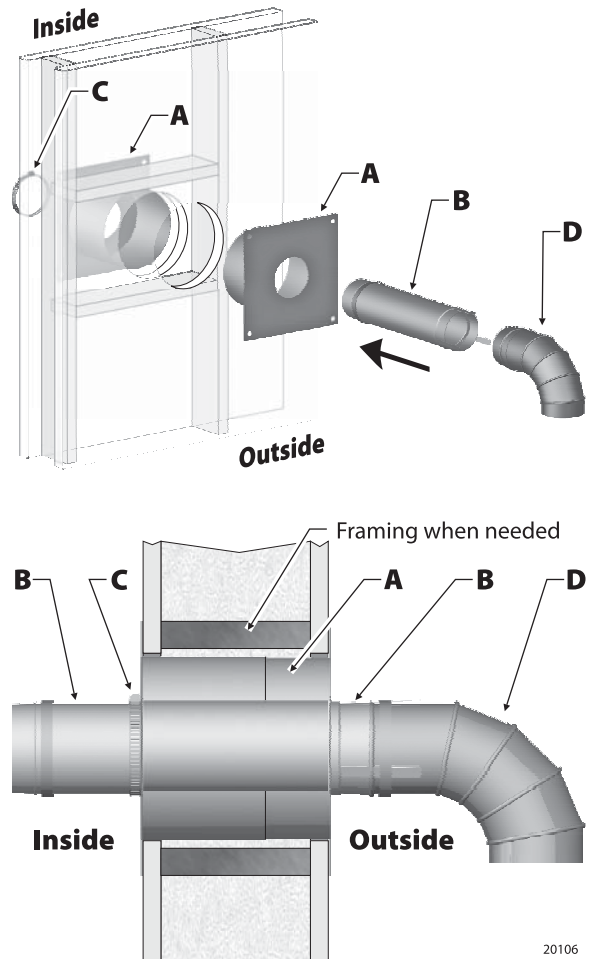
Insert the termination elbow and secure using the vent pipe manufacturer's joint assembly procedure.

Termination location — Install the vent pipe termination where it meets the minimum clearances shown in Figure 12.

Exiting below grade or snow line — See Figure 13. When the vent pipe must exit the building grade or below the minimum height for the termination elbow, install vertical piping as necessary for the termination elbow to be high enough to meet the minimum clearances of Figure 12. Make sure to support the piping using wall brackets available from the vent pipe manufacturer.

If the pipe extends more than 3 feet, insulate the external portion of the pipe and fittings with at least ½-inch closed-cell foam polyolefin pipe insulation.

Figure 11 Termination minimum clearances



20106

Combustion air openings

❑ Combustion air must be supplied from the boiler room as shown in Figure 1. Make sure the installation provides air openings as required by applicable codes and the Boiler manual.

Multiple boiler installations

❑ Each boiler must be individually vented. **DO NOT** use combined venting.

❑ Install multiple vents through the side wall following all guidelines for single-vent installations.

❑ Install the vents so they are no closer than 12 inches (305 mm) on centers.



4 Vent piped through a side wall (combustion air from the boiler room) (cont.)

Figure 12 Termination minimum clearances

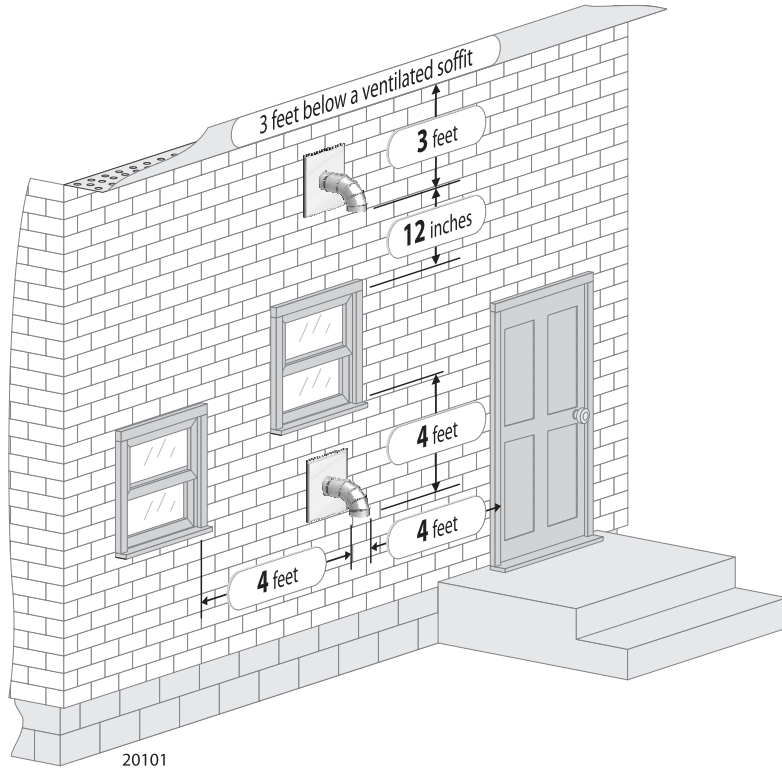
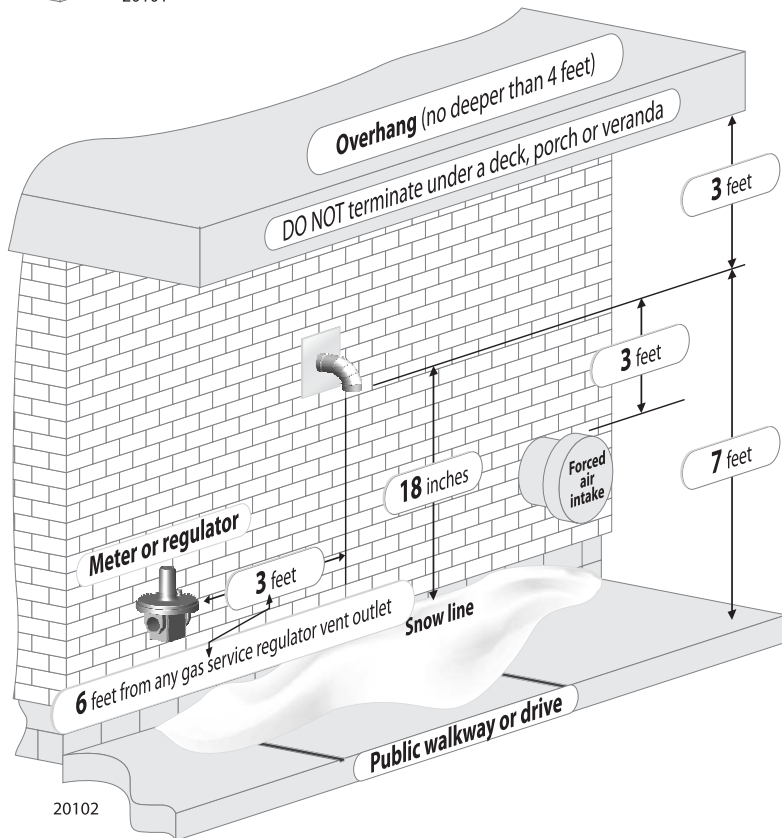
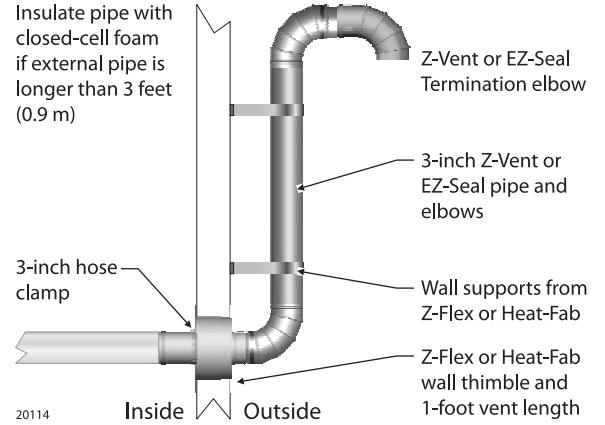


Figure 13 Using external piping to raise the termination



To convert to metric dimensions:
meters = feet x 0.3
millimeters = inches x 25.4



5 Vent and air piped through a side wall (separate terminations)

Read before proceeding

WARNING The vent piping operates with positive pressure. The vent piping must be completely sealed and securely supported.

Use only the vent components listed in this manual. Use of any other materials could result in vent system failure.

Exposed vent pipe poses a potential burn hazard to people and pets. Insulate or shield the pipe where necessary to prevent risk.

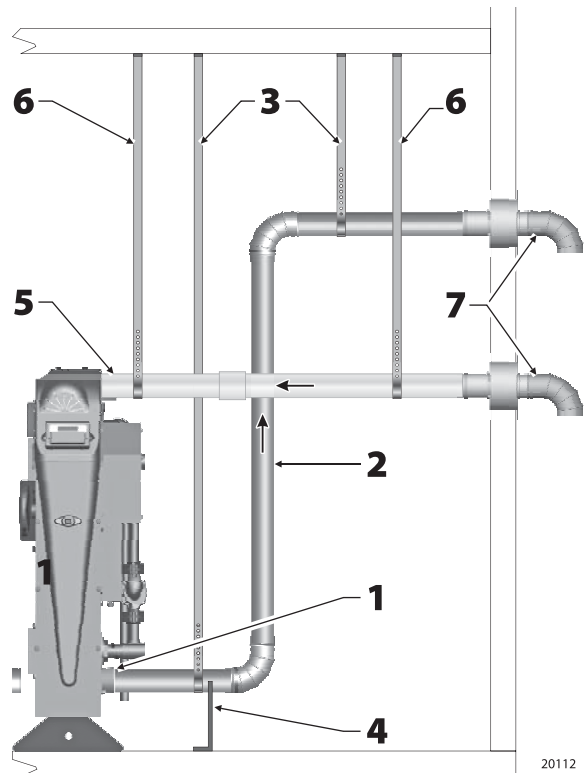
Never drill through, or install screws into, the vent pipe or vent components.

Failure to properly install the vent piping could result in flue gas leakage, causing possible severe personal injury, death or substantial property damage.

NOTICE Code compliance — Follow all applicable local codes when installing the vent system. Where codes differ from this manual, follow code requirements. Contact Mestek if you have any questions regarding the installation.

WARNING Terminate the vent and air piping following the guidelines in this manual. Avoid vent termination locations likely to be affected by winds, snowdrifts, people and pets. Protect building materials and vegetation from degradation caused by the flue gases and condensation.

Figure 14 Vertical venting/sidewall air



Maximum total vent and air pipe lengths:

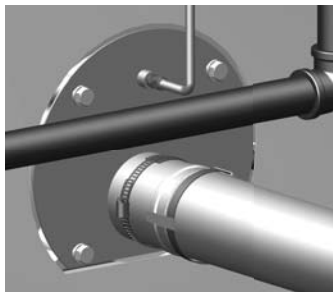
- 1–90° Ell 90 feet (27 m)
- 2–90° Ells 80 feet (24 m)
- 3–90° Ells 70 feet (21 m)
- 4–90° Ells 60 feet (18 m)
- (2–45° Elbows = 1–90° Elbow)

(The termination elbow does not have to be counted for the vent or air piping. If the piping contains no ells except the termination, maximum pipe length can be up to 60 feet.)

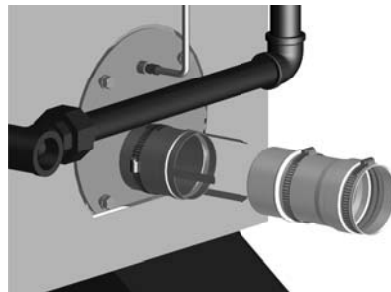
Vent piping (see Figure 14)

1 — Boiler vent connection

- The vent connection at the boiler is for 3-inch Heat-Fab EZ-Seal vent piping only. To use Z-Flex Z-Vent venting you must install the Z-Vent adapter, part number 2SVSHTA03.



EZ-Seal vent attachment



Z-Vent adapter attachment

EZ-Seal connection: Insert EZ-Seal pipe male end into the boiler connection. Make sure the locking tabs slide under the EZ-Seal locking ring. Bend back locking tabs to complete the joint. Follow EZ-Seal instructions to complete the vent piping installation.

Z-Vent adapter installation: Insert male end of adapter into boiler vent connection. Make sure the locking tabs slide under the gear clamp on the adapter. Bend back the locking tabs (as in left illustration above). Then tighten the adapter gear clamp to finish the connection. Follow Z-Vent instructions to connect Z-Vent piping.

Table 5 Vent and air system components

Vent components	Heat-Fab	Z-Flex
Vent piping/components (incl. supports, thimbles, etc.)	EZ-Seal 3-inch	Z-Vent 3-inch
Boiler adapter (adapts from Heat-fab to Z-vent piping)	Not required	2SVSHTA03
Termination elbow	9314TERM	2SVSTEX0390
Termination pipe section (1 ft)	9302	2SVPEWCF0301
Termination thimble	9393S	2SVSWTE03
Gear clamp (hose clamp)	3-inch clamp	7HS44XX
Joint sealant, as needed	GE RTV106 or equivalent	
Air components	Heat-Fab	Z-Flex
Termination elbow	Same as vent termination	
Air piping/components (also supports, thimbles, etc.)	3-inch PVC, CPVC, ABS, galvanized or aluminum	



5 Vent and air piped through a side wall (separate terminations) (cont.)

- ❑ **Slope horizontal runs toward the boiler.** All horizontal runs of vent pipe must slope continuously at least ¼ inch per foot (21 mm per meter) to ensure condensate drains completely back to the boiler. DO NOT install the vent piping with any sections that could trap condensate.

2 — Vent piping components

- ❑ See Table 5 for acceptable vent components. **NO OTHER** vent materials are acceptable.
- ❑ Carefully follow the instructions supplied by the vent piping manufacturer.
- ❑ Install the sidewall vent termination before installing the vent piping.
- ❑ The vent joints seal with elastomer rings in the pipe and fittings. Avoid damaging these seals.
- ❑ **Cutting Z-Vent pipe** (Z-Vent only — DO NOT cut EZ-Seal pipe) — Length adjustments with Z-Vent pipe can be done by cutting the pipe, following the Z-Vent instructions. Be sure to cut the pipe squarely and to file the cut edge smooth after cutting. Rough pipe ends will damage the seals. Support the pipe when cutting to avoid making the pipe out of round.
- ❑ **Adjustable lengths of EZ-Seal pipe** — Length adjustments with EZ-Seal piping are done with slip-fit adjustable length sections, not by cutting the pipe. Make sure the adjustable length does not jut into elbows or terminations. This could block flue gas and condensate flow.
- ❑ **Maximum vent piping length** — See the table in Figure 14 for the maximum allowable length. Each elbow causes the same pressure drop as 10 feet of vent pipe, so the allowable length reduces 10 feet for each elbow used in the piping. When 45° elbows are used, two 45° elbows are equivalent to one 90° elbow.
- ❑ **Insulate the vent piping where it passes through unheated areas** to prevent condensate freeze-up. If the vent terminates through a combustible wall, leave the last 18 inches of vent pipe uninsulated.
- ❑ If the pipe passes through an occupied space, install a chase around the pipe, following the vent pipe instructions and applicable codes.
- ❑ **Clearance from combustible materials** — Provide minimum clearance to all combustible materials of at least 2 inches (51 mm).

3 & 4 — Support the vent piping completely

- ❑ **DO NOT use the boiler vent connection to support the vent piping.** Provide support straps from the ceiling or noncombustible saddle or pedestal supports from the floor. This is required on ALL installations, regardless of the length of the horizontal piping connected to the boiler.
- ❑ **Install at least one support on every horizontal run.** For horizontal runs longer than 5 feet (1.5 m), install a support every 3 feet (0.9 m).
- ❑ Vent piping cannot be supported from above (such as relying on roof jack sections). You must install supports on the horizontal piping before the vent turns upward. Provide a support on the horizontal piping **within 6 inches of every up-turned elbow** to support the vertical run.
- ❑ Follow the vent pipe manufacturer's instructions for placement and installation of supports.
- ❑ Follow applicable codes and the vent pipe instructions to install fire stops, thimbles or other devices at all floor and wall penetrations.
- ❑ Provide minimum 2 inches (51 mm) clearance to all combustible construction.

5 — Air pipe connection

- ❑ Before installing the air piping, install the air pipe sidewall termination assembly (item 7, Figure 14). See instructions on next page.
- ❑ Construct the air piping from 3-inch PVC, CPVC or ABS plastic, or 3-inch galvanized or aluminum metallic pipe (including flexible aluminum duct if desired).

NOTICE

When using metallic piping — seal all of the longitudinal seam joints in addition to the component joints.

- ❑ Attach the air piping to the boiler air connection, preferably using silicone RTV to seal the connection. If the boiler room air is free of contaminants you can use metallic duct tape to seal the joints. With age, however, duct tape adhesives can loosen, so duct tape is not as reliable as silicone RTV.
- ❑ If the installation is required to meet direct vent (sealed combustion) requirements, seal all joints with silicone RTV. The air pipe installation must be air-tight and water-tight.
- ❑ **Maximum air piping length** — See the table in Figure 14 for the maximum allowable length. Each elbow causes the same pressure drop as 10 feet of vent pipe, so the allowable length reduces 10 feet for each elbow used in the piping. When 45° elbows are used, two 45° elbows are equivalent to one 90° elbow.

6 — Supporting air piping

- ❑ **DO NOT use the boiler air connection to support the air piping.** Provide support straps from the ceiling or install wall brackets.
- ❑ Provide at least one support on all air pipe installations.
- ❑ Provide a support every 3 feet for air pipe lengths greater than 5 feet horizontally.
- ❑ Provide a support on the horizontal piping within 6 inches of every upturned elbow to support the vertical run.

7 — Sidewall termination assemblies

- ❑ See next page.

continued on next page



5 Vent and air piped through a side wall (separate terminations)

7 — Sidewall termination assemblies (see Figure 15)

- See Table 5 for part numbers of the sidewall termination components required for Z-Vent and EZ-Seal vent pipe installations. The vent termination must be constructed using the stainless steel vent materials listed in Table 5 to ensure the configuration is correct. **DO NOT** terminate the air piping with any other method.

A. Wall thimble — Use only the thimble listed in Table 5. The hole in the thimble will prevent the pipe length (B) from being pushed inward. The raised portion of the pipe female end is too large to pass through the hole in the thimble. Follow the vent pipe manufacturer's instructions supplied with the thimble. If the wall thimble isn't long enough for the application, follow the vent manufacturer's instructions to add an extension.

Noncombustible walls — For noncombustible walls **ONLY**, you can omit the thimble. The vent pipe can be inserted through a 3½-inch hole. For this option, **attach a storm collar on both the inside and outside walls at the penetration**. Before attaching the collars, seal around the vent pipe thoroughly with silicone RTV to prevent air leakage or insect access. The storm collar tightens around the vent pipe with a gear clamp. This prevents movement of the finished assembly. You will still need to use the length of vent pipe and the termination elbow described below. Storm collar part numbers are 4326SS for EZ-Seal or 2SVLSLF03 for Z-Vent.

Air intake termination alternate construction — Air pipe terminations can be installed without thimbles through all walls, whether combustible or noncombustible. The termination assemblies **must use storm collars** as described above for vent piping through noncombustible walls.

B. Length of vent pipe — Use a 1-foot length of vent pipe as listed in Table 5 unless the wall penetration requires a longer length. If a longer length is required, use a length of EZ-Seal or Z-Vent long enough for the application.

Insert the pipe from **OUTSIDE**, male end first. The pipe will stop at the raised section of the female end.

C. Gear clamp — Use a 3-inch hose clamp or a gear clamp manufactured by the vent manufacturer (see Table 5).

Slide the clamp over the male end of the pipe after the pipe has been inserted from outside.

From the inside, pull the pipe so it is firmly against the outside plate.

Push the gear clamp against the inside plate and tighten securely. This will prevent the termination assembly from being pushed outward.

D. Termination elbows — Use only the termination elbows listed in Table 5. The elbows must be pointed downward.

Before inserting the male end of the elbow into the pipe, apply a bead of silicone RTV and spread around the end.

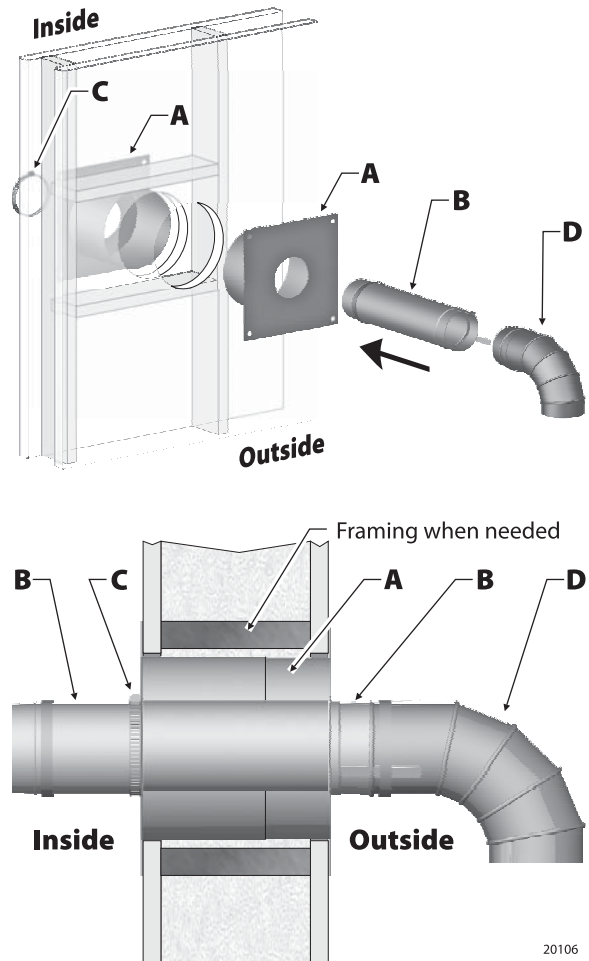
Insert the termination elbow and secure using the vent pipe manufacturer's joint assembly procedure.

Termination location — Install the vent pipe termination where it meets the minimum clearances shown in Figure 16 and minimum spacing to air intakes as shown in Figure 18.

Exiting below grade or snow line — See Figure 17. When the vent pipe must exit the building below grade or below the minimum height for the termination elbow, install vertical piping as necessary for the termination elbow to be high enough to meet the minimum clearances of Figure 16. Make sure to support the piping using wall brackets available from the vent pipe manufacturer.

If the vent pipe extends more than 3 feet (0.9 m), insulate the external portion of the pipe and fittings with at least ½-inch closed-cell foam polyolefin pipe insulation. Air pipes do not have to be insulated.

Figure 15 Termination minimum clearances



20106

- Spacing between vent and air terminations** — Place all vent and air terminations so they meet the clearances shown in Figure 17. requires a longer length. If a longer length is required, use a length of EZ-Seal or Z-Vent long enough for the application.

Multiple boiler installations

- Each boiler must be individually vented and air pipes must be separate. **DO NOT** use combined venting or air piping.
- Install multiple vent and air terminations through the side wall following all guidelines for single-vent/air installations.
- Install the terminations so they are no closer than 12 inches (305 mm) on centers and all terminations comply with minimum clearances shown in Figure 16 and Figure 18.
- See Figure 18 for relative placement of vent and air terminals to ensure sufficient clearance.



5 Vent and air piped through a side wall (separate terminations) (cont.)

Figure 16 Vent termination minimum clearances (see Figure 18 for required spacing between vent and air terminations)

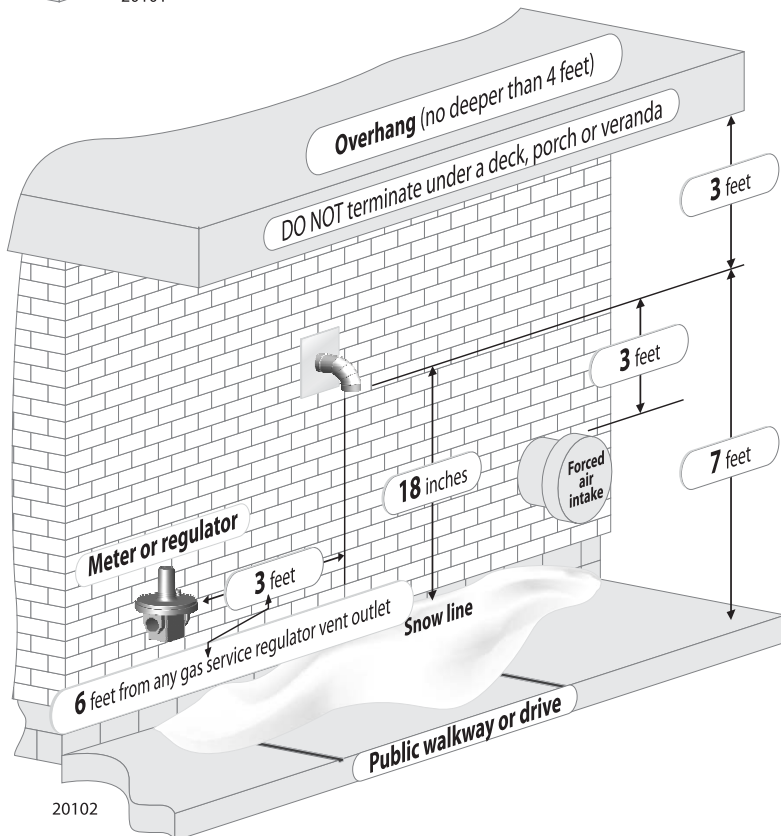
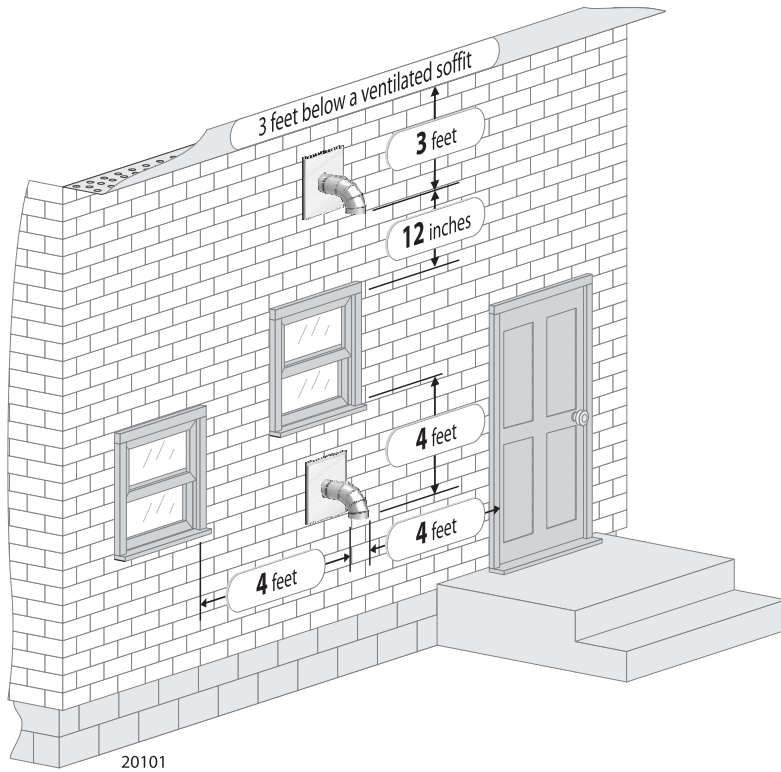


Figure 17 Using external piping to raise the termination

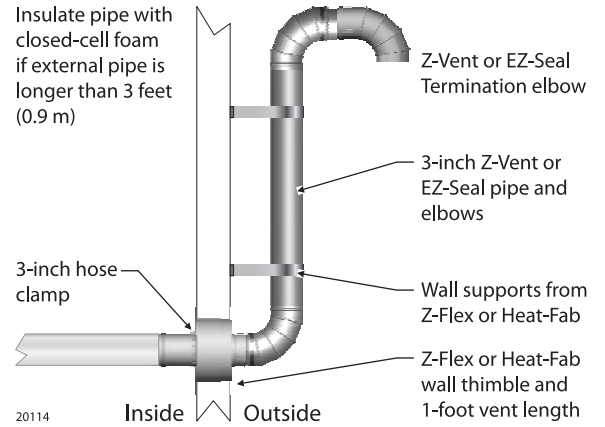
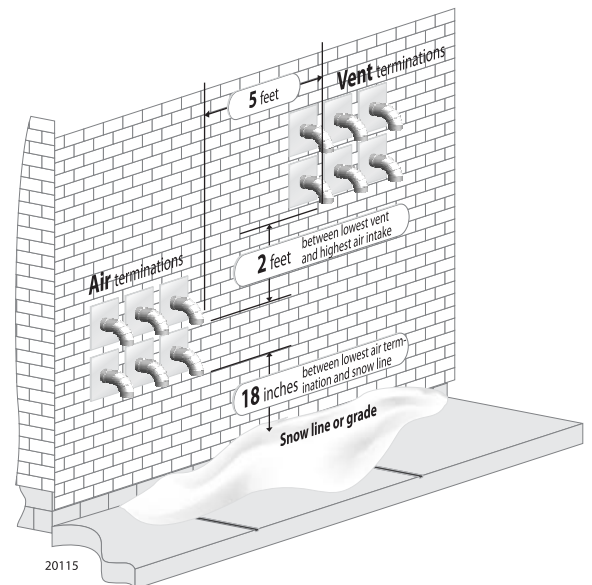


Figure 18 Minimum spacing between vent and air termination elbows (vents must also be placed to meet the minimum spacings shown in Figure 16)



To convert to metric dimensions:
 meters = feet x 0.3
 millimeters = inches x 25.4



6 Vent and air piped through a side wall (concentric termination)

Read before proceeding

WARNING The vent piping operates with positive pressure. The vent piping must be completely sealed and securely supported.

Use only the vent components listed in this manual. Use of any other materials could result in vent system failure.

Exposed vent pipe poses a potential burn hazard to people and pets. Insulate or shield the pipe where necessary to prevent risk.

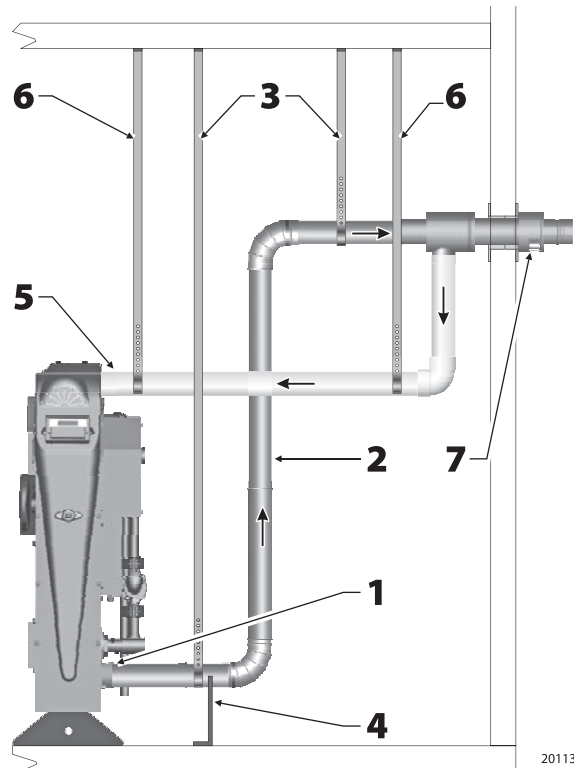
Never drill through, or install screws into, the vent pipe or vent components.

Failure to properly install the vent piping could result in flue gas leakage, causing possible severe personal injury, death or substantial property damage.

NOTICE Code compliance — Follow all applicable local codes when installing the vent system. Where codes differ from this manual, follow code requirements. Contact Mestek if you have any questions regarding the installation.

WARNING Terminate the vent and air piping following the guidelines in this manual. Avoid vent termination locations likely to be affected by winds, snowdrifts, people and pets. Protect building materials and vegetation from degradation caused by the flue gases and condensation.

Figure 19 Vertical venting/sidewall air

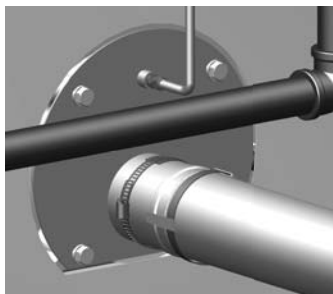


20113

Vent piping (see Figure 19)

1 — Boiler vent connection

- The vent connection at the boiler is for 3-inch Heat-Fab EZ-Seal vent piping only. To use Z-Flex Z-Vent venting you must install the Z-Vent adapter, part number 2SVSHTA03.



EZ-Seal vent attachment

Insert EZ-Seal pipe male end into the boiler connection. Make sure the locking tabs slide under the EZ-Seal locking ring. Bend back locking tabs to complete the joint. Follow EZ-Seal instructions to complete the vent piping installation.

The concentric vent/air termination must be done only with Saf-T Vent type SC vent components. This requires that all of the vent piping be Saf-T Vent EZ-Seal for compatibility. DO NOT apply this vent/air termination option using any other vent materials.

Maximum total vent and air pipe lengths:

- 1—90° Ell 90 feet (27 m)
- 2—90° Ells 80 feet (24 m)
- 3—90° Ells 70 feet (21 m)
- 4—90° Ells 60 feet (18 m)
- (2—45° Elbows = 1—90° Elbow)

Table 6 Vent and air system components

Vent components	Heat-Fab
Vent piping/components (incl. supports, thimbles, etc.)	EZ-Seal, 3-inch piping Saf-T Vent SC fittings for termination assembly
Termination assembly:	
• Single-wall adapter	SC03ADEZ
• Air intake tee	SC03TAD3
• 6-inch straight section or 12-inch straight section	SC03L6 SC03L12
• Wall plate (2 required)	SC03FS
• Termination adapter	SC03HT
• Mitered termination	9390
Joint sealant, as needed	GE RTV106 or equivalent
Air components	Heat-Fab
Air piping/components (also supports, thimbles, etc.)	3-inch PVC, CPVC, ABS, galvanized or aluminum



6 Vent and air piped through a side wall (concentric termination) (cont.)

- ❑ **Slope horizontal runs toward the boiler.** All horizontal runs of vent pipe must slope continuously at least ¼ inch per foot (21 mm per meter) to ensure condensate drains completely back to the boiler. **DO NOT** install the vent piping with any sections that could trap condensate.

2 — Vent piping components

- ❑ See Table 6 for acceptable vent components. **NO OTHER** vent materials are acceptable.
- ❑ Carefully follow the instructions supplied by the vent piping manufacturer.
- ❑ Install the sidewall termination/concentric vent-air assembly (item 7, Figure 19) before installing the vent or air piping.
- ❑ The vent joints seal with elastomer rings in the pipe and fittings. Avoid damaging these seals.
- ❑ **Adjustable lengths of EZ-Seal pipe** — Length adjustments with EZ-Seal piping are done with slip-fit adjustable length sections, not by cutting the pipe. Make sure the adjustable length does not jut into elbows or terminations. This could block flue gas and condensate flow.
- ❑ **Maximum vent piping length** — See the table in Figure 19 for the maximum allowable length. Each elbow causes the same pressure drop as 10 feet of vent pipe, so the allowable length reduces 10 feet for each elbow used in the piping. When 45° elbows are used, two 45° elbows are equivalent to one 90° elbow.
- ❑ **Insulate the vent piping where it passes through unheated areas** to prevent condensate freeze-up.
- ❑ If the pipe passes through an occupied space, install a chase around the pipe, following the vent pipe instructions and applicable codes.
- ❑ **Clearance from combustible materials** — Provide minimum clearance to all combustible materials of at least 2 inches (51 mm).

3 & 4 — Support the vent piping completely

- ❑ **DO NOT use the boiler vent connection to support the vent piping.** Provide support straps from the ceiling or noncombustible saddle or pedestal supports from the floor. This is required on ALL installations, regardless of the length of the horizontal piping connected to the boiler.
- ❑ **Install at least one support on every horizontal run.** For horizontal runs longer than 5 feet (1.5 m), install a support every 3 feet (0.9 m).
- ❑ Vent piping cannot be supported from above (such as relying on roof jack sections). You must install supports on the horizontal piping before the vent turns upward. Provide a support on the horizontal piping **within 6 inches of every up-turned elbow** to support the vertical run.
- ❑ Follow the vent pipe manufacturer's instructions for placement and installation of supports.
- ❑ Follow applicable codes and the vent pipe instructions to install fire stops, thimbles or other devices at all floor and wall penetrations.
- ❑ Provide minimum 2 inches (51 mm) clearance to all combustible construction.

5 — Air pipe connection

- ❑ Before installing the air piping, install the air pipe sidewall termination assembly (item 7, Figure 19). See instructions on next page.
- ❑ Construct the air piping from 3-inch PVC, CPVC or ABS plastic, or 3-inch galvanized or aluminum metallic pipe (including flexible aluminum duct if desired).

NOTICE When using metallic piping — seal all of the longitudinal seam joints in addition to the component joints.

- ❑ Attach the air piping to the boiler air connection, preferably using silicone RTV to seal the connection. If the boiler room air is free of contaminants you can use metallic duct tape to seal the joints. With age, however, duct tape adhesives can loosen, so duct tape is not as reliable as silicone RTV.
- ❑ If the installation is required to meet direct vent (sealed combustion) requirements, seal all joints with the silicone RTV. The air pipe installation must be air-tight and water-tight.
- ❑ **Maximum air piping length** — See the table in Figure 19 for the maximum allowable length. Each elbow causes the same pressure drop as 10 feet of vent pipe, so the allowable length reduces 10 feet for each elbow used in the piping. When 45° elbows are used, two 45° elbows are equivalent to one 90° elbow.

6 — Supporting air piping

- ❑ **DO NOT use the boiler air connection to support the air piping.** Provide support straps from the ceiling or install wall brackets.
- ❑ Provide at least one support on all air pipe installations.
- ❑ Provide a support every 3 feet for air pipe lengths greater than 5 feet horizontally.
- ❑ Provide a support on the horizontal piping within 6 inches of every upturned elbow to support the vertical run.

7 — Sidewall termination/concentric vent-air assembly

- ❑ See next page.

continued on next page



6 Vent and air piped through a side wall (concentric termination)

7 — Sidewall concentric vent-air termination

- ❑ See Table 6 for part numbers of the sidewall termination components required for EZ-Seal vent pipe installations. The vent termination must be constructed using the stainless steel vent materials listed in Table 5 to ensure the configuration is correct. **DO NOT** terminate the air piping with any other method.
 - A. Wall plates (2 required)** — Use only the plates listed in Table 6. Follow the vent manufacturer's instruction to prepare the wall and mount the plates.

The air space provided by the design of the SC type vent allows the concentric vent/air pipe to be run directly through combustible or noncombustible walls. No thimble is needed unless specified by applicable codes.

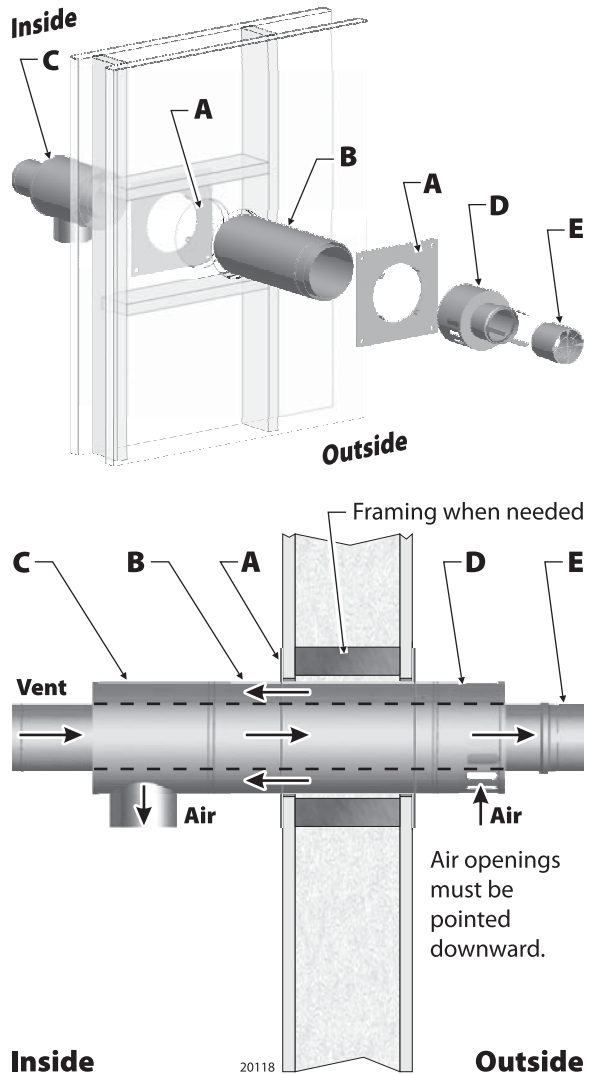
After the pipe (item **B**) is inserted and placed, follow the vent manufacturer's instructions to insert self-tapping screws through the four tabs in each of the wall plates into the holes in the pipe. This secures the pipe in place.

Follow the vent pipe manufacturer's instructions for sealing around the plates and the pipe.
 - B. Length of concentric vent pipe** — Use a 1-foot length of vent pipe as listed in Table 6 unless the wall penetration requires a longer length. If a longer length is required, use a length of Heat-Fab type SC vent long enough for the application.
 - C. Air intake tee** — The air intake tee provides a connection for the air piping to feed air through the outer plenum of the type SC vent and fittings. Secure the vent pipe to the end following the vent pipe manufacturer's instructions for assembling joints. Attach the air pipe to the air connection using silicone RTV to seal the joint.
 - D. Termination adapter** — Assemble the termination adapter to the type SC pipe, following the vent pipe manufacturer's instructions for making the joint.
 - E. Termination screen** — Apply a bead of silicone RTV to the male end of the screen fitting before inserting into the adapter. Bend the adapter tabs over the end of the screen fitting.
- ❑ **Termination locations** — Place all terminations so they meet the clearances shown in Figure 21.

Multiple boiler installations

- ❑ Each boiler must be individually vented and air pipes must be separate. **DO NOT** use combined venting or air piping.
- ❑ Install multiple vent/air terminations through the side wall following all guidelines for single-vent/air installations.
- ❑ Install the terminations so they are no closer than 2 feet (0.6 m) on horizontal centers and 4 feet on vertical centers (Figure 22).
- ❑ All terminations must comply with minimum clearances shown in Figure 21.

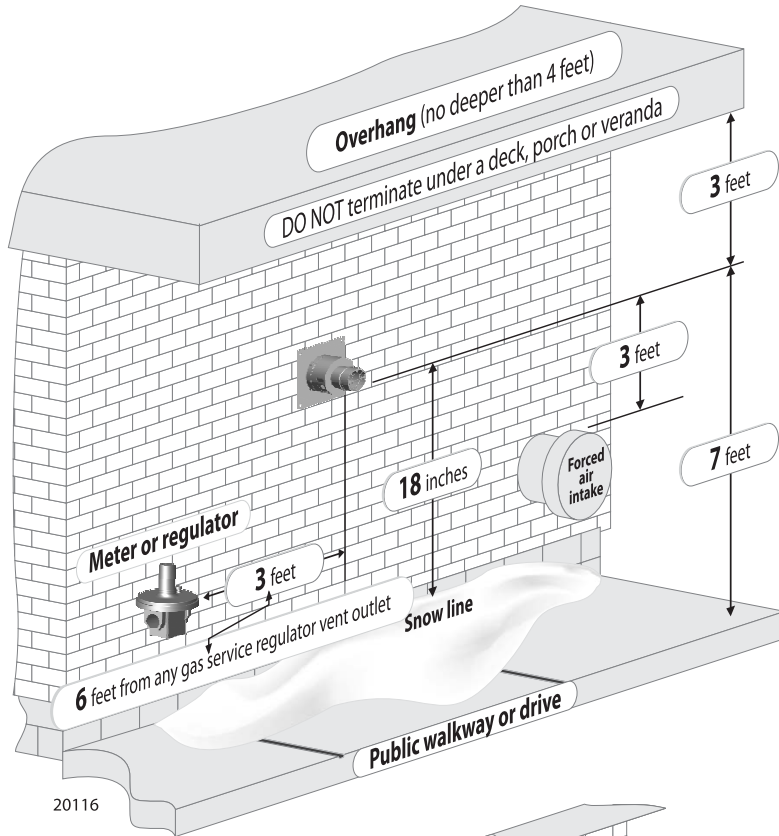
Figure 20 Sidewall concentric vent-air termination





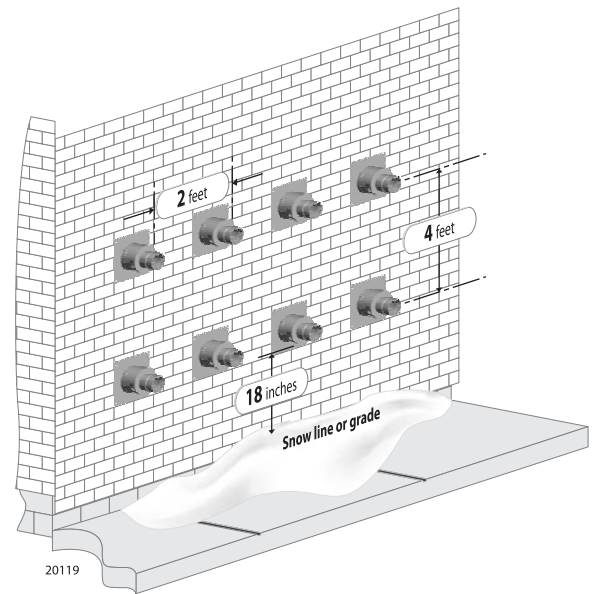
6 Vent and air piped through a side wall (concentric termination) (cont.)

Figure 21 Termination minimum clearances (see Figure 22 for required spacing between terminations)

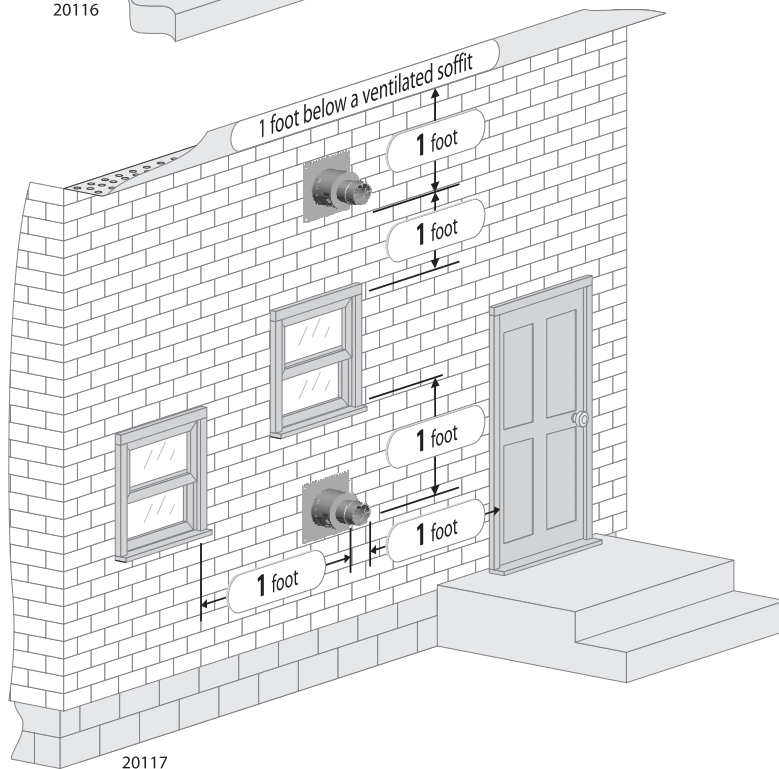


20116

Figure 22 Minimum spacing between terminations (terminations must also be placed to meet the minimum spacings shown in Figure 21)



20119



20117

To convert to metric dimensions:
 meters = feet x 0.3
 millimeters = inches x 25.4



7 Notes



7 Notes



Mestek, Inc.

260 N Elm Street
Ph (413) 568-9571

Westfield, MA 01085
Fx (413) 568-3463